

KDM5C Rabbit pAb

Catalog No.: A15740

Basic Information

Observed MW

180kDa

Calculated MW

155kDa/170kDa/175kDa

Category

Primary antibody

Applications

WB

Cross-Reactivity

Human, Mouse, Rat

Background

This gene is a member of the SMCY homolog family and encodes a protein with one ARID domain, one JmjC domain, one JmjN domain and two PHD-type zinc fingers. The DNA-binding motifs suggest this protein is involved in the regulation of transcription and chromatin remodeling. Mutations in this gene have been associated with X-linked mental retardation. Alternative splicing results in multiple transcript variants.

Recommended Dilutions

WB 1:500 - 1:2000

Immunogen Information

Gene ID

8242

Swiss Prot

P41229

Immunogen

A synthetic peptide corresponding to a sequence within amino acids 1400 to the C-terminus of human KDM5C (XP_011529128.1).

Synonyms

KDM5C;DXS1272E;JARID1C;MRX13;MRXJ;MRXSCJ;MRXSJ;SMCX;XE169

Contact

 | www.abclonal.com

Product Information

Source

Rabbit

Isotype

IgG

Purification

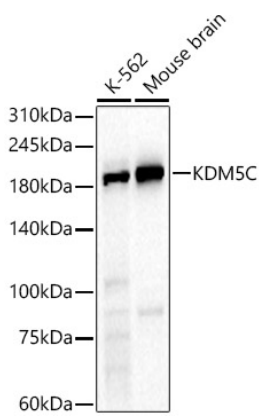
Affinity purification

Storage

Store at -20°C. Avoid freeze / thaw cycles.

Buffer: PBS with 0.01% thiomersal, 50% glycerol, pH7.3.

Validation Data



Western blot analysis of various lysates, using KDM5C antibody (A15740) at 1:2960 dilution. Secondary antibody: HRP Goat Anti-Rabbit IgG (H+L) (AS014) at 1:10000 dilution. Lysates/proteins: 25ug per lane. Blocking buffer: 3% nonfat dry milk in TBST. Detection: ECL Basic Kit (RM00020). Exposure time: 30s.