

# GPR62 Rabbit pAb

Catalog No.: A16163

## Basic Information

### Observed MW

39KDa

### Calculated MW

37kDa

### Category

Primary antibody

### Applications

WB

### Cross-Reactivity

Human, Mouse, Rat

## Background

Orphan G-protein coupled receptor. Constitutively activates the G(q/11)/inositol phosphate and the G(s-alpha)/cAMP signaling pathways. Has spontaneous activity for beta-arrestin recruitment. Shows a reciprocal modulation of signaling functions with the melatonin receptor MTNR1B most likely through receptor heteromerization.

## Recommended Dilutions

WB 1:500 - 1:2000

## Immunogen Information

### Gene ID

118442

### Swiss Prot

Q9BZJ7

### Immunogen

A synthetic peptide corresponding to a sequence within amino acids 150-250 of human GPR62 (NP\_543141.3).

### Synonyms

GPR62;GPCR8;KPG\_005

## Contact

 | [www.abclonal.com](http://www.abclonal.com)

## Product Information

### Source

Rabbit

### Isotype

IgG

### Purification

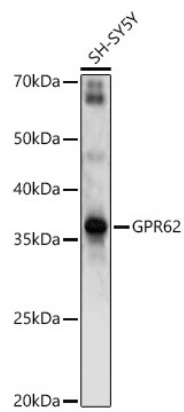
Affinity purification

### Storage

Store at -20°C. Avoid freeze / thaw cycles.

Buffer: PBS with 0.01% thiomersal, 50% glycerol, pH7.3.

# Validation Data



Western blot analysis of extracts of SH-SY5Y cells, using GPR62 antibody (A16163) at 1:1000 dilution.  
Secondary antibody: HRP Goat Anti-Rabbit IgG (H+L) (A5014) at 1:10000 dilution.  
Lysates/proteins: 25ug per lane.  
Blocking buffer: 3% nonfat dry milk in TBST.  
Detection: ECL Enhanced Kit (RM00021).  
Exposure time: 90s.