

BMPR2 Rabbit pAb

Catalog No.: A16778

Basic Information

Observed MW

100kDa

Calculated MW

59kDa/115kDa

Category

Primary antibody

Applications

WB,IHC

Cross-Reactivity

Human, Mouse, Rat

Background

This gene encodes a member of the bone morphogenetic protein (BMP) receptor family of transmembrane serine/threonine kinases. The ligands of this receptor are BMPs, which are members of the TGF-beta superfamily. BMPs are involved in endochondral bone formation and embryogenesis. These proteins transduce their signals through the formation of heteromeric complexes of two different types of serine (threonine) kinase receptors: type I receptors of about 50-55 kD and type II receptors of about 70-80 kD. Type II receptors bind ligands in the absence of type I receptors, but they require their respective type I receptors for signaling, whereas type I receptors require their respective type II receptors for ligand binding. Mutations in this gene have been associated with primary pulmonary hypertension, both familial and fenfluramine-associated, and with pulmonary venoocclusive disease.

Recommended Dilutions

WB	1:500 - 1:2000
IHC	1:50 - 1:200

Immunogen Information

Gene ID	Swiss Prot
659	Q13873

Immunogen

Recombinant fusion protein containing a sequence corresponding to amino acids 27-150 of human BMPR2 (NP_001195.2).

Synonyms

BMPR2;BMPR-II;BMPR3;BMR2;BRK-3;POVD1;PPH1;T-ALK

Contact

 | www.abclonal.com

Product Information

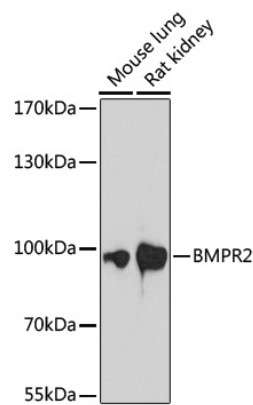
Source	Isotype	Purification
Rabbit	IgG	Affinity purification

Storage

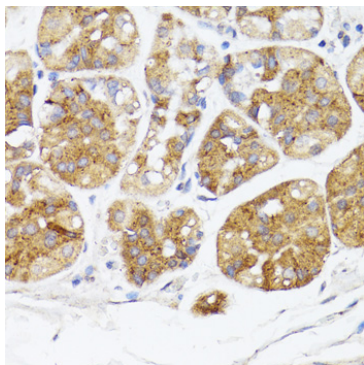
Store at -20°C. Avoid freeze / thaw cycles.

Buffer: PBS with 0.02% sodium azide, 50% glycerol, pH7.3.

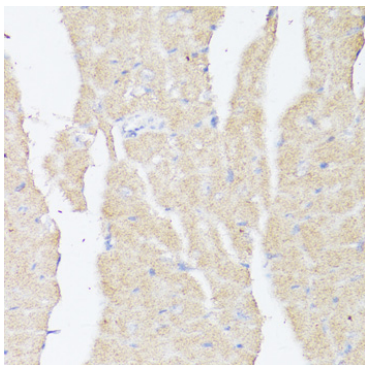
Validation Data



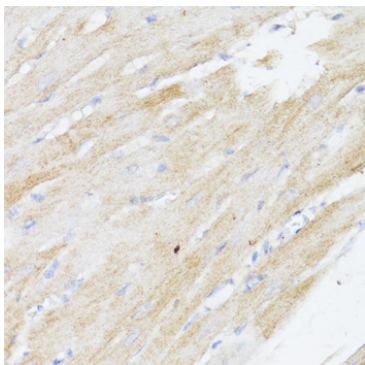
Western blot analysis of extracts of various cell lines, using BMPR2 antibody (A16778) at 1:1000 dilution.
Secondary antibody: HRP Goat Anti-Rabbit IgG (H+L) (A5014) at 1:10000 dilution.
Lysates/proteins: 25ug per lane.
Blocking buffer: 3% nonfat dry milk in TBST.
Detection: ECL Basic Kit (RM00020).
Exposure time: 90s.



Immunohistochemistry of paraffin-embedded human stomach using BMPR2 antibody (A16778) at dilution of 1:100 (40x lens).Perform microwave antigen retrieval with 10 mM PBS buffer pH 7.2 before commencing with IHC staining protocol.



Immunohistochemistry of paraffin-embedded mouse heart using BMPR2 antibody (A16778) at dilution of 1:100 (40x lens).Perform microwave antigen retrieval with 10 mM PBS buffer pH 7.2 before commencing with IHC staining protocol.



Immunohistochemistry of paraffin-embedded rat heart using BMPR2 antibody (A16778) at dilution of 1:100 (40x lens).Perform microwave antigen retrieval with 10 mM PBS buffer pH 7.2 before commencing with IHC staining protocol.