

PIGP Rabbit pAb

Catalog No.: A15446

Basic Information

Observed MW

22kDa

Calculated MW

12kDa/15kDa/18kDa

Category

Primary antibody

Applications

WB

Cross-Reactivity

Mouse

Background

This gene encodes an enzyme involved in the first step of glycosylphosphatidylinositol (GPI)-anchor biosynthesis. The GPI-anchor is a glycolipid found on many blood cells that serves to anchor proteins to the cell surface. The encoded protein is a component of the GPI-N-acetylglucosaminyltransferase complex that catalyzes the transfer of N-acetylglucosamine (GlcNAc) from UDP-GlcNAc to phosphatidylinositol (PI). This gene is located in the Down Syndrome critical region on chromosome 21 and is a candidate for the pathogenesis of Down syndrome. This gene has multiple pseudogenes and is a member of the phosphatidylinositol glycan anchor biosynthesis gene family. Alternatively spliced transcript variants encoding different isoforms have been described.

Recommended Dilutions

WB 1:200 - 1:2000

Immunogen Information

Gene ID

51227

Swiss Prot

P57054

Immunogen

Recombinant fusion protein containing a sequence corresponding to amino acids 25-158 of human PIGP (NP_710148.1).

Synonyms

PIGP;DCRC;DCRC-S;DSCR5;DSRC;PIG-P

Contact

 | www.abclonal.com

Product Information

Source

Rabbit

Isotype

IgG

Purification

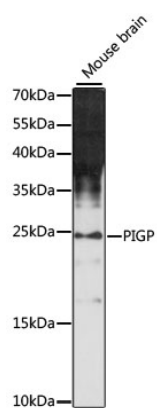
Affinity purification

Storage

Store at -20°C. Avoid freeze / thaw cycles.

Buffer: PBS with 0.01% thiomersal, 50% glycerol, pH7.3.

Validation Data



Western blot analysis of extracts of mouse brain, using PIGP antibody (A15446) at 1:1000 dilution.
Secondary antibody: HRP Goat Anti-Rabbit IgG (H+L) (A5014) at 1:10000 dilution.
Lysates/proteins: 25ug per lane.
Blocking buffer: 3% nonfat dry milk in TBST.
Detection: ECL Enhanced Kit (RM00021).
Exposure time: 90s.