

Kininogen 1 (KNG1) Rabbit pAb

Catalog No.: A1670

Basic Information

Observed MW

72KDa

Calculated MW

43kDa/47kDa/71kDa

Category

Primary antibody

Applications

WB, IF/ICC

Cross-Reactivity

Human, Mouse, Rat

Background

This gene uses alternative splicing to generate two different proteins- high molecular weight kininogen (HMWK) and low molecular weight kininogen (LMWK). HMWK is essential for blood coagulation and assembly of the kallikrein-kinin system. Also, bradykinin, a peptide causing numerous physiological effects, is released from HMWK. Bradykinin also functions as an antimicrobial peptide with antibacterial and antifungal activity. In contrast to HMWK, LMWK is not involved in blood coagulation. Three transcript variants encoding different isoforms have been found for this gene.

Recommended Dilutions

WB 1:500 - 1:2000**IF/ICC** 1:50 - 1:200

Immunogen Information

Gene ID

3827

Swiss Prot

P01042

Immunogen

Recombinant fusion protein containing a sequence corresponding to amino acids 20-374 of human Kininogen 1 (KNG1) (NP_001095886.1).

Synonyms

KNG1;BDK;BK;KNG

Contact

 | www.abclonal.com

Product Information

Source

Rabbit

Isotype

IgG

Purification

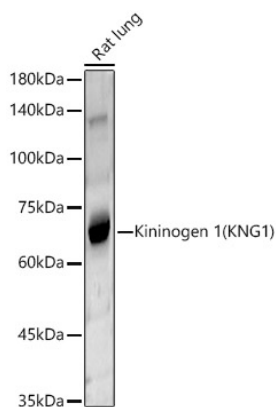
Affinity purification

Storage

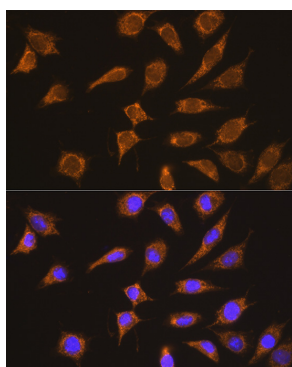
Store at -20°C. Avoid freeze / thaw cycles.

Buffer: PBS with 0.05% proclin300, 50% glycerol, pH7.3.

Validation Data



Western blot analysis of Rat lung, using Kininogen1(KNG1) antibody (A1670) at 1:490 dilution.
Secondary antibody: HRP Goat Anti-Rabbit IgG (H+L) (AS014) at 1:10000 dilution.
Lysates/proteins: 25ug per lane.
Blocking buffer: 3% nonfat dry milk in TBST.
Detection: ECL Basic Kit (RM00020).
Exposure time: 30s.



Immunofluorescence analysis of L929 cells
using Kininogen 1 (Kininogen 1 (KNG1))
Rabbit pAb (A1670) at dilution of 1:100
(40x lens). Blue: DAPI for nuclear staining.