

TRAM1 Rabbit pAb

Catalog No.: A15142 **1 Publications**

Basic Information

Observed MW

45kDa

Calculated MW

39kDa/43kDa

Category

Primary antibody

Applications

WB

Cross-Reactivity

Human, Mouse

Background

This gene encodes a multi-pass membrane protein that is part of the mammalian endoplasmic reticulum. The encoded protein influences glycosylation and facilitates the translocation of secretory proteins across the endoplasmic reticulum membrane by regulating which domains of the nascent polypeptide chain are visible to the cytosol during a translocational pause.

Recommended Dilutions

WB 1:500 - 1:2000

Immunogen Information

Gene ID

23471

Swiss Prot

Q15629

Immunogen

Recombinant fusion protein containing a sequence corresponding to amino acids 305-374 of human TRAM1 (NP_055109.1).

Synonyms

TRAM1;PNAS8;TRAM;TRAMP

Contact

 | www.abclonal.com

Product Information

Source

Rabbit

Isotype

IgG

Purification

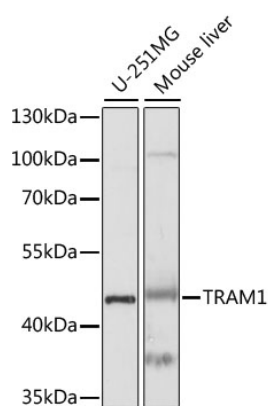
Affinity purification

Storage

Store at -20°C. Avoid freeze / thaw cycles.

Buffer: PBS with 0.01% thiomersal, 50% glycerol, pH7.3.

Validation Data



Western blot analysis of extracts of various cell lines, using TRAM1 antibody (A15142) at 1:1000 dilution.

Secondary antibody: HRP Goat Anti-Rabbit IgG (H+L) (A5014) at 1:10000 dilution.

Lysates/proteins: 25ug per lane.

Blocking buffer: 3% nonfat dry milk in TBST.

Detection: ECL Basic Kit (RM00020).

Exposure time: 10s.