

BMP2 Rabbit pAb

Catalog No.: A14708

Basic Information

Observed MW

53kDa

Calculated MW

44kDa

Category

Primary antibody

Applications

WB, IHC

Cross-Reactivity

Mouse, Rat

Background

This gene encodes a secreted ligand of the TGF-beta (transforming growth factor-beta) superfamily of proteins. Ligands of this family bind various TGF-beta receptors leading to recruitment and activation of SMAD family transcription factors that regulate gene expression. The encoded preproprotein is proteolytically processed to generate each subunit of the disulfide-linked homodimer, which plays a role in bone and cartilage development. Duplication of a regulatory region downstream of this gene causes a form of brachydactyly characterized by a malformed index finger and second toe in human patients.

Recommended Dilutions

WB	1:500 - 1:2000
IHC	1:50 - 1:200

Immunogen Information

Gene ID

650

Swiss Prot

P12643

Immunogen

A synthetic peptide corresponding to a sequence within amino acids 1-100 of human BMP2 (NP_001191.1).

Synonyms

BDA2;BMP2A;BMP2

Contact

 | www.abclonal.com

Product Information

Source

Rabbit

Isotype

IgG

Purification

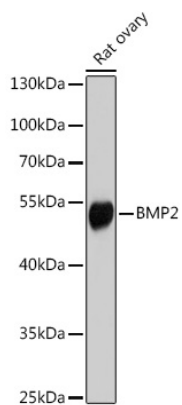
Affinity purification

Storage

Store at -20°C. Avoid freeze / thaw cycles.

Buffer: PBS with 0.02% sodium azide, 50% glycerol, pH7.3.

Validation Data



Western blot analysis of extracts of Rat ovary, using BMP2 antibody (A14708) at 1:1000 dilution.
Secondary antibody: HRP Goat Anti-Rabbit IgG (H+L) (A5014) at 1:10000 dilution.
Lysates/proteins: 25ug per lane.
Blocking buffer: 3% nonfat dry milk in TBST.
Detection: ECL Basic Kit (RM00020).
Exposure time: 90s.