

# ABCB7 Rabbit pAb

Catalog No.: A14699

## Basic Information

**Observed MW**

83kDa

**Calculated MW**

78kDa/82kDa

**Category**

Primary antibody

**Applications**

WB, IHC, IF/ICC

**Cross-Reactivity**

Human, Mouse, Rat

## Background

The membrane-associated protein encoded by this gene is a member of the superfamily of ATP-binding cassette (ABC) transporters. ABC proteins transport various molecules across extra- and intra-cellular membranes. ABC genes are divided into seven distinct subfamilies (ABC1, MDR/TAP, MRP, ALD, OABP, GCN20, White). This protein is a member of the MDR/TAP subfamily. Members of the MDR/TAP subfamily are involved in multidrug resistance as well as antigen presentation. This gene encodes a half-transporter involved in the transport of heme from the mitochondria to the cytosol. With iron/sulfur cluster precursors as its substrates, this protein may play a role in metal homeostasis. Mutations in this gene have been associated with mitochondrial iron accumulation and isodiscentric (X)(q13) and sideroblastic anemia. Alternatively spliced transcript variants encoding multiple isoforms have been observed for this gene.

## Recommended Dilutions

<b>WB</b>	1:500 - 1:2000
<b>IHC</b>	1:50 - 1:200
<b>IF/ICC</b>	1:50 - 1:200

## Immunogen Information

<b>Gene ID</b>	<b>Swiss Prot</b>
22	O75027

**Immunogen**

Recombinant fusion protein containing a sequence corresponding to amino acids 503-753 of human ABCB7 (NP\_004290.2).

**Synonyms**

ABCB7;ABC7;ASAT;Atm1p;EST140535

## Contact

 | [www.abclonal.com](http://www.abclonal.com)

## Product Information

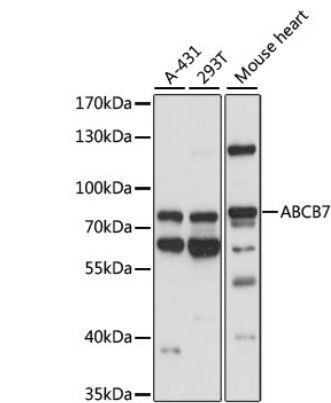
<b>Source</b>	<b>Isotype</b>	<b>Purification</b>
Rabbit	IgG	Affinity purification

**Storage**

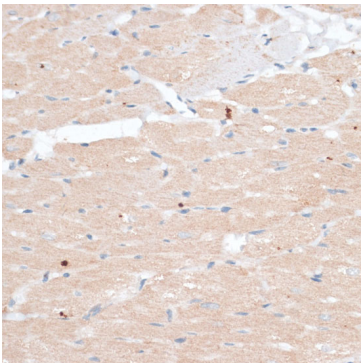
Store at -20°C. Avoid freeze / thaw cycles.

Buffer: PBS with 0.01% thiomersal, 50% glycerol, pH 7.3.

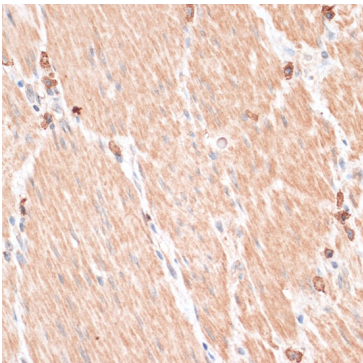
Validation Data



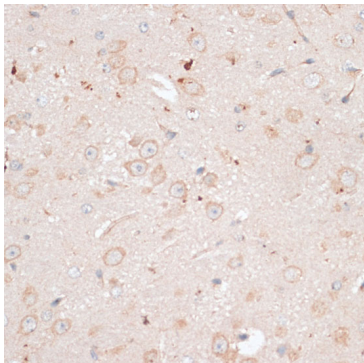
Western blot analysis of extracts of various cell lines, using ABCB7 antibody (A14699) at 1:1000 dilution.  
Secondary antibody: HRP Goat Anti-Rabbit IgG (H+L) (AS014) at 1:10000 dilution.  
Lysates/proteins: 25ug per lane.  
Blocking buffer: 3% nonfat dry milk in TBST.  
Detection: ECL Basic Kit (RM00020).  
Exposure time: 10s.



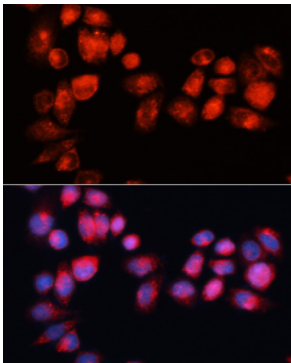
Immunohistochemistry of paraffin-embedded rat heart using ABCB7 antibody (A14699) at dilution of 1:100 (40x lens).



Immunohistochemistry of paraffin-embedded human gastric cancer using ABCB7 antibody (A14699) at dilution of 1:100 (40x lens).



Immunohistochemistry of paraffin-embedded mouse brain using ABCB7 antibody (A14699) at dilution of 1:100 (40x lens).



Immunofluorescence analysis of HeLa cells using ABCB7 antibody (A14699) at dilution of 1:100 (40x lens). Blue: DAPI for nuclear staining.