

# TIMP3 Rabbit pAb

Catalog No.: A11986 **2 Publications**

## Basic Information

### Observed MW

20kDa

### Calculated MW

24kDa

### Category

Primary antibody

### Applications

WB

### Cross-Reactivity

Human, Mouse, Rat

## Background

This gene belongs to the TIMP gene family. The proteins encoded by this gene family are inhibitors of the matrix metalloproteinases, a group of peptidases involved in degradation of the extracellular matrix (ECM). Expression of this gene is induced in response to mitogenic stimulation and this netrin domain-containing protein is localized to the ECM. Mutations in this gene have been associated with the autosomal dominant disorder Sorsby's fundus dystrophy.

## Recommended Dilutions

**WB** 1:500 - 1:2000

## Immunogen Information

### Gene ID

7078

### Swiss Prot

P35625

### Immunogen

A synthetic peptide corresponding to a sequence within amino acids 150-211 of human TIMP3 (NP\_000353.1).

### Synonyms

TIMP3;HSMRK222;K222;K222TA2;SFD

## Contact

 | [www.abclonal.com](http://www.abclonal.com)

## Product Information

### Source

Rabbit

### Isotype

IgG

### Purification

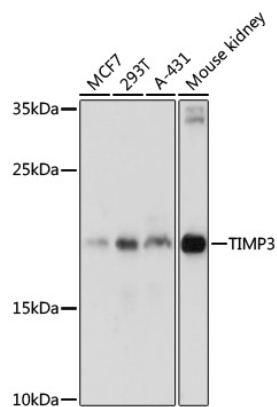
Affinity purification

### Storage

Store at -20°C. Avoid freeze / thaw cycles.

Buffer: PBS with 0.01% thiomersal, 50% glycerol, pH7.3.

# Validation Data



Western blot analysis of extracts of various cell lines, using TIMP3 antibody (A11986) at 1:1000 dilution.  
Secondary antibody: HRP Goat Anti-Rabbit IgG (H+L) (AS014) at 1:10000 dilution.  
Lysates/proteins: 25ug per lane.  
Blocking buffer: 3% nonfat dry milk in TBST.  
Detection: ECL Basic Kit (RM00020).  
Exposure time: 3min.