

# BDNF Rabbit pAb

Catalog No.: A11028

## Basic Information

### Observed MW

15kDa/35kDa

### Calculated MW

27kDa/28kDa/29kDa/31kDa/37kDa

### Category

Primary antibody

### Applications

WB,IF/ICC

### Cross-Reactivity

Human, Mouse, Rat

## Background

This gene encodes a member of the nerve growth factor family of proteins. Alternative splicing results in multiple transcript variants, at least one of which encodes a preproprotein that is proteolytically processed to generate the mature protein. Binding of this protein to its cognate receptor promotes neuronal survival in the adult brain. Expression of this gene is reduced in Alzheimer's, Parkinson's, and Huntington's disease patients. This gene may play a role in the regulation of the stress response and in the biology of mood disorders.

## Recommended Dilutions

<b>WB</b>	1:500 - 1:2000
<b>IF/ICC</b>	1:50 - 1:200

## Immunogen Information

<b>Gene ID</b>	<b>Swiss Prot</b>
627	P23560

### Immunogen

Recombinant fusion protein containing a sequence corresponding to amino acids 129-247 of human BDNF (NP\_733931.1).

### Synonyms

BDNF;ANON2;BULN2

## Contact

 | [www.abclonal.com](http://www.abclonal.com)

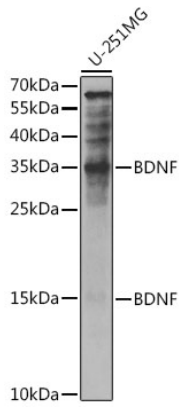
## Product Information

<b>Source</b>	<b>Isotype</b>	<b>Purification</b>
Rabbit	IgG	Affinity purification

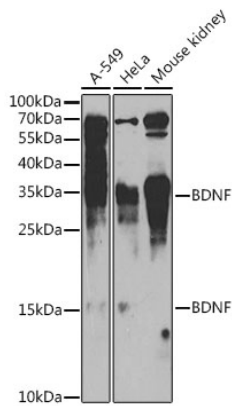
### Storage

Store at -20°C. Avoid freeze / thaw cycles.  
Buffer: PBS with 0.01% thiomersal,50% glycerol,pH7.3.

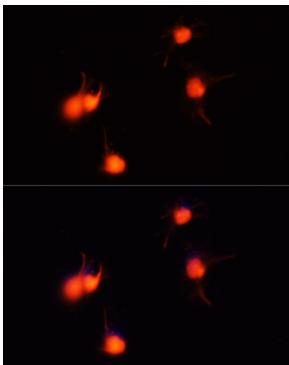
## Validation Data



Western blot analysis of extracts of U-251MG cells, using BDNF antibody (A11028) at 1:1000 dilution. Secondary antibody: HRP Goat Anti-Rabbit IgG (H+L) (AS014) at 1:10000 dilution. Lysates/proteins: 25ug per lane. Blocking buffer: 3% nonfat dry milk in TBST. Detection: ECL Basic Kit (RM00020). Exposure time: 5s.



Western blot analysis of extracts of various cell lines, using BDNF antibody (A11028) at 1:1000 dilution. Secondary antibody: HRP Goat Anti-Rabbit IgG (H+L) (AS014) at 1:10000 dilution. Lysates/proteins: 25ug per lane. Blocking buffer: 3% nonfat dry milk in TBST. Detection: ECL Basic Kit (RM00020). Exposure time: 30s.



Immunofluorescence analysis of U-251MG cells using BDNF antibody (A11028) at dilution of 1:100 (40x lens). Blue: DAPI for nuclear staining.