

EED Rabbit pAb

Catalog No.: A12773 **1 Publications**

Basic Information

Observed MW

50-75kDa

Calculated MW

45kDa/50kDa/53kDa

Category

Primary antibody

Applications

WB, IHC, IF/ICC

Cross-Reactivity

Human, Mouse, Rat

Background

This gene encodes a member of the Polycomb-group (PcG) family. PcG family members form multimeric protein complexes, which are involved in maintaining the transcriptional repressive state of genes over successive cell generations. This protein interacts with enhancer of zeste 2, the cytoplasmic tail of integrin beta7, immunodeficiency virus type 1 (HIV-1) MA protein, and histone deacetylase proteins. This protein mediates repression of gene activity through histone deacetylation, and may act as a specific regulator of integrin function. Two transcript variants encoding distinct isoforms have been identified for this gene.

Recommended Dilutions

WB	1:500 - 1:2000
IHC	1:50 - 1:100
IF/ICC	1:50 - 1:100

Immunogen Information

Gene ID	Swiss Prot
8726	O75530


Immunogen

A synthetic peptide corresponding to a sequence within amino acids 1-100 of human EED (NP_003788.2).

Synonyms

EED; HEED; WAIT1

Contact

 | www.abclonal.com

Product Information

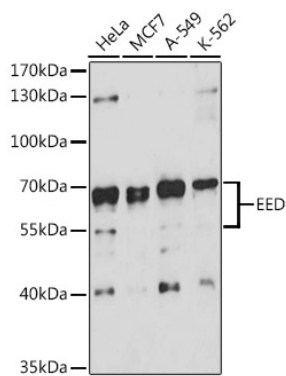
Source	Isotype	Purification
Rabbit	IgG	Affinity purification

Storage

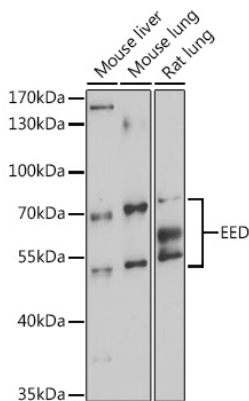
Store at -20°C. Avoid freeze / thaw cycles.

Buffer: PBS with 0.01% thiomersal, 50% glycerol, pH7.3.

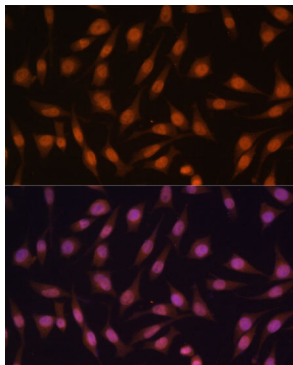
Validation Data



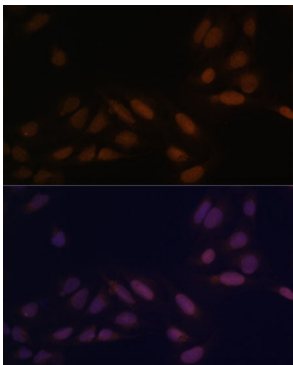
Western blot analysis of extracts of various cell lines, using EED antibody (A12773) at 1:3000 dilution.
Secondary antibody: HRP Goat Anti-Rabbit IgG (H+L) (AS014) at 1:10000 dilution.
Lysates/proteins: 25ug per lane.
Blocking buffer: 3% nonfat dry milk in TBST.
Detection: ECL Basic Kit (RM00020).
Exposure time: 90s.



Western blot analysis of extracts of various cell lines, using EED antibody (A12773) at 1:3000 dilution.
Secondary antibody: HRP Goat Anti-Rabbit IgG (H+L) (AS014) at 1:10000 dilution.
Lysates/proteins: 25ug per lane.
Blocking buffer: 3% nonfat dry milk in TBST.
Detection: ECL Enhanced Kit (RM00021).
Exposure time: 90s.



Immunofluorescence analysis of L929 cells using EED Polyclonal Antibody (A12773) at dilution of 1:100 (40x lens). Blue: DAPI for nuclear staining.



Immunofluorescence analysis of U-2 OS cells using EED Polyclonal Antibody (A12773) at dilution of 1:100 (40x lens). Blue: DAPI for nuclear staining.