

# ACE2 Rabbit pAb

Catalog No.: A12737 **4 Publications**

## Basic Information

**Observed MW**

100kDa/120kDa

**Calculated MW**

63kDa/92kDa

**Category**

Primary antibody

**Applications**

WB, IHC, IF/ICC

**Cross-Reactivity**

Human, Mouse, Rat

## Background

The protein encoded by this gene belongs to the angiotensin-converting enzyme family of dipeptidyl carboxypeptidases and has considerable homology to human angiotensin 1 converting enzyme. This secreted protein catalyzes the cleavage of angiotensin I into angiotensin 1-9, and angiotensin II into the vasodilator angiotensin 1-7. The organ- and cell-specific expression of this gene suggests that it may play a role in the regulation of cardiovascular and renal function, as well as fertility. In addition, the encoded protein is a functional receptor for the spike glycoprotein of the human coronaviruses SARS and HCoV-NL63.

## Recommended Dilutions

<b>WB</b>	1:500 - 1:2000
<b>IHC</b>	1:50 - 1:200
<b>IF/ICC</b>	1:50 - 1:200

## Immunogen Information

**Gene ID**

59272

**Swiss Prot**

Q9BYF1

**Immunogen**

A synthetic peptide corresponding to a sequence within amino acids 200-300 of human ACE2 (NP\_068576.1).

**Synonyms**

ACE2;ACEH

## Contact

 | [www.abclonal.com](http://www.abclonal.com)

## Product Information

**Source**

Rabbit

**Isotype**

IgG

**Purification**

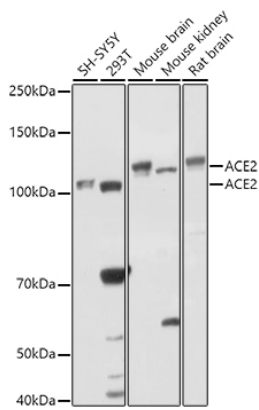
Affinity purification

**Storage**

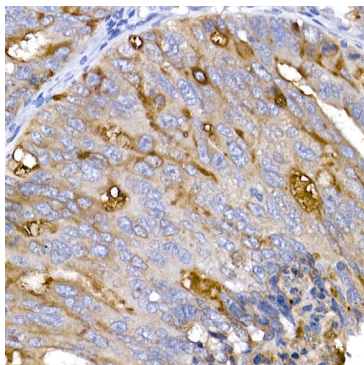
Store at -20°C. Avoid freeze / thaw cycles.

Buffer: PBS with 0.05% proclin300, 50% glycerol, pH7.3.

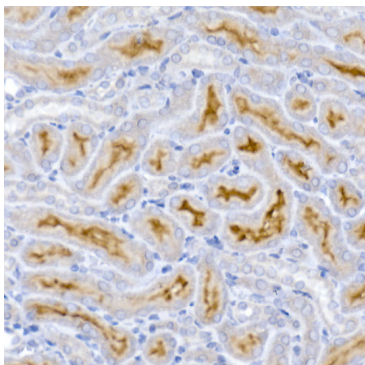
Validation Data



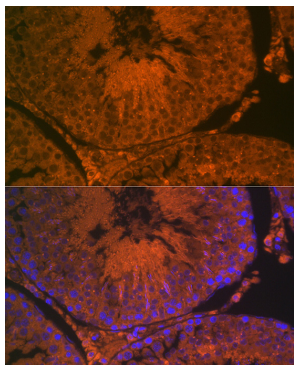
Western blot analysis of extracts of various cell lines, using ACE2 antibody (A12737) at 1:1000 dilution.  
Secondary antibody: HRP Goat Anti-Rabbit IgG (H+L) (A5014) at 1:10000 dilution.  
Lysates/proteins: 25ug per lane.  
Blocking buffer: 3% nonfat dry milk in TBST.  
Detection: ECL Basic Kit (RM00020).  
Exposure time: 60s.



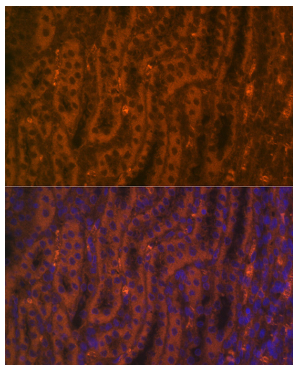
Immunohistochemistry of paraffin-embedded human colon carcinoma using ACE2 Rabbit pAb (A12737) at dilution of 1:50 (40x lens).Perform high pressure antigen retrieval with 10 mM citrate buffer pH 6.0 before commencing with IHC staining protocol.



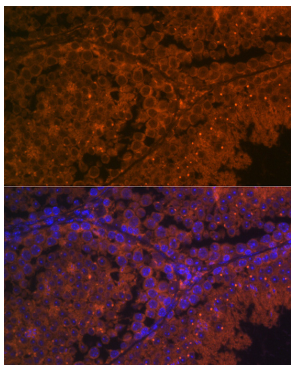
Immunohistochemistry of paraffin-embedded mouse kidney using ACE2 Rabbit pAb (A12737) at dilution of 1:50 (40x lens).Perform high pressure antigen retrieval with 10 mM citrate buffer pH 6.0 before commencing with IHC staining protocol.



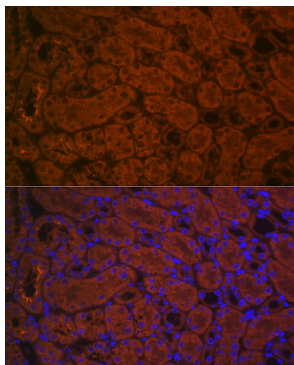
Immunofluorescence analysis of rat testis using ACE2 Rabbit pAb (A12737) at dilution of 1:100 (40x lens). Blue: DAPI for nuclear staining.



Immunofluorescence analysis of rat kidney using ACE2 Rabbit pAb (A12737) at dilution of 1:100 (40x lens). Blue: DAPI for nuclear staining.



Immunofluorescence analysis of mouse testis using ACE2 Rabbit pAb (A12737) at dilution of 1:100 (40x lens). Blue: DAPI for nuclear staining.



Immunofluorescence analysis of mouse kidney using ACE2 Rabbit pAb (A12737) at dilution of 1:100 (40x lens). Blue: DAPI for nuclear staining.