

LAPTM4B Rabbit pAb

Catalog No.: A10761

Basic Information

Observed MW

37kDa

Calculated MW

25kDa/35kDa/41kDa

Category

Primary antibody

Applications

WB

Cross-Reactivity

Human, Mouse, Rat

Background

Required for optimal lysosomal function. Blocks EGF-stimulated EGFR intraluminal sorting and degradation. Conversely by binding with the phosphatidylinositol 4,5-bisphosphate, regulates its PIP5K1C interaction, inhibits HGS ubiquitination and relieves LAPTM4B inhibition of EGFR degradation. Recruits SLC3A2 and SLC7A5 (the Leu transporter to the lysosome, promoting entry of leucine and other essential amino acid (EAA into the lysosome, stimulating activation of proton-transporting vacuolar (V-ATPase protein pump (V-ATPase and hence mTORC1 activation. Plays a role as negative regulator of TGF β 1 production in regulatory T cells. Binds ceramide and facilitates its exit from late endosome in order to control cell death pathways.

Recommended Dilutions

WB 1:500 - 1:2000

Immunogen Information

Gene ID

55353

Swiss Prot

Q86VI4

Immunogen

Recombinant fusion protein containing a sequence corresponding to amino acids 218-317 of human LAPTM4B (NP_060877.3).

Synonyms

LAPTM4B;LAPTM4beta;LC27

Contact

 | www.abclonal.com

Product Information

Source

Rabbit

Isotype

IgG

Purification

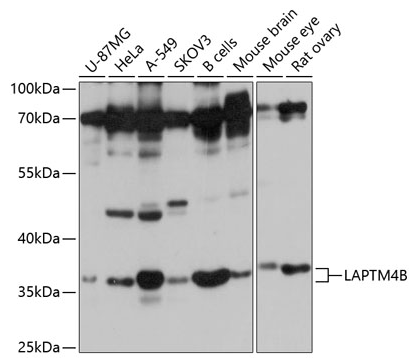
Affinity purification

Storage

Store at -20°C. Avoid freeze / thaw cycles.

Buffer: PBS with 0.01% thiomersal, 50% glycerol, pH7.3.

Validation Data



Western blot analysis of extracts of various cell lines, using LAPT4B antibody (A10761) at 1:1000 dilution.

Secondary antibody: HRP Goat Anti-Rabbit IgG (H+L) (AS014) at 1:10000 dilution.

Lysates/proteins: 25ug per lane.

Blocking buffer: 3% nonfat dry milk in TBST.

Detection: ECL Basic Kit (RM00020).

Exposure time: 10s.