

# MFF Rabbit pAb

Catalog No.: A12392

## Basic Information

### Observed MW

38kDa

### Calculated MW

25kDa/27kDa/32kDa/38kDa

### Category

Primary antibody

### Applications

WB

### Cross-Reactivity

Human

## Background

This is a nuclear gene encoding a protein that functions in mitochondrial and peroxisomal fission. The encoded protein recruits dynamin-1-like protein (DNM1L) to mitochondria. There are multiple pseudogenes for this gene on chromosomes 1, 5, and X. Alternative splicing results in multiple transcript variants.

## Recommended Dilutions

WB 1:500 - 1:2000

## Immunogen Information

### Gene ID

56947

### Swiss Prot

Q9GZY8

### Immunogen

Recombinant fusion protein containing a sequence corresponding to amino acids 15-170 of human MFF (NP\_064579.3).

### Synonyms

MFF;C2orf33;EMPF2;GL004

## Contact

 | [www.abclonal.com](http://www.abclonal.com)

## Product Information

### Source

Rabbit

### Isotype

IgG

### Purification

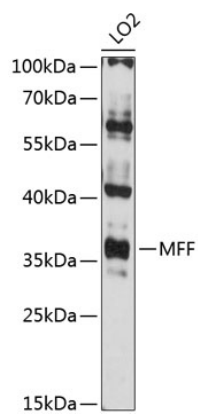
Affinity purification

### Storage

Store at -20°C. Avoid freeze / thaw cycles.

Buffer: PBS with 0.01% thiomersal, 50% glycerol, pH7.3.

# Validation Data



Western blot analysis of extracts of LO2 cells, using MFF antibody (A12392) at 1:3000 dilution. Secondary antibody: HRP Goat Anti-Rabbit IgG (H+L) (AS014) at 1:10000 dilution. Lysates/proteins: 25ug per lane. Blocking buffer: 3% nonfat dry milk in TBST. Detection: ECL Enhanced Kit (RM00021). Exposure time: 90s.