

# PKM2 Rabbit pAb

Catalog No.: A0268 **7 Publications**

## Basic Information

### Observed MW

62kDa

### Calculated MW

56kDa/57kDa/58kDa

### Category

Primary antibody

### Applications

WB,IF

### Cross-Reactivity

Human, Mouse

## Background

This gene encodes a protein involved in glycolysis. The encoded protein is a pyruvate kinase that catalyzes the transfer of a phosphoryl group from phosphoenolpyruvate to ADP, generating ATP and pyruvate. This protein has been shown to interact with thyroid hormone and may mediate cellular metabolic effects induced by thyroid hormones. This protein has been found to bind Opa protein, a bacterial outer membrane protein involved in gonococcal adherence to and invasion of human cells, suggesting a role of this protein in bacterial pathogenesis. Several alternatively spliced transcript variants encoding a few distinct isoforms have been reported.

## Recommended Dilutions

<b>WB</b>	1:500 - 1:2000
<b>IF</b>	1:20 - 1:100

## Immunogen Information

<b>Gene ID</b>	<b>Swiss Prot</b>
5315	P14618

### Immunogen

Recombinant fusion protein containing a sequence corresponding to amino acids 11-221 of PKM2 (NP\_001193728.1).

### Synonyms

CTHBP;HEL-S-30;OIP3;PK3;PKM2;TCB;THBP1;PKM

## Contact

 | [www.abclonal.com](http://www.abclonal.com)

## Product Information

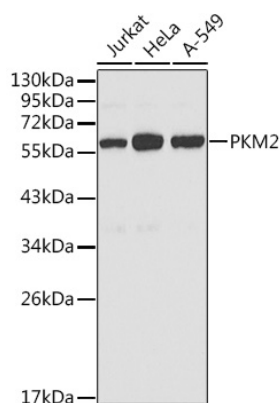
<b>Source</b>	<b>Isotype</b>	<b>Purification</b>
Rabbit	IgG	Affinity purification

### Storage

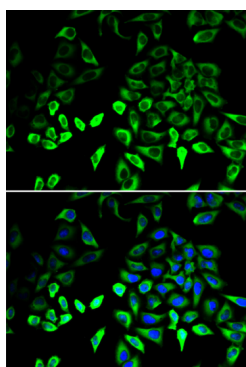
Store at -20°C. Avoid freeze / thaw cycles.

Buffer: PBS with 0.02% sodium azide, 50% glycerol, pH7.3.

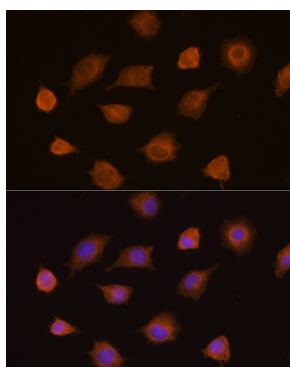
## Validation Data



Western blot analysis of extracts of various cell lines, using PKM2 antibody (A0268) at 1:1000 dilution.  
Secondary antibody: HRP Goat Anti-Rabbit IgG (H+L) (A5014) at 1:10000 dilution.  
Lysates/proteins: 25ug per lane.  
Blocking buffer: 3% nonfat dry milk in TBST.



Immunofluorescence analysis of U2OS cells using PKM2 antibody (A0268). Blue: DAPI for nuclear staining.



Immunofluorescence analysis of L929 cells using PKM2 Rabbit pAb (A0268) at dilution of 1:100 (40x lens). Blue: DAPI for nuclear staining.