

# ABCF2 Rabbit pAb

Catalog No.: A12555

## Basic Information

### Observed MW

71kDa

### Calculated MW

71kDa/72kDa

### Category

Primary antibody

### Applications

WB

### Cross-Reactivity

Human, Mouse, Rat

## Background

This gene encodes a member of the ATP-binding cassette (ABC) transporter superfamily. ATP-binding cassette proteins transport various molecules across extra- and intracellular membranes. Alterations in this gene may be involved in cancer progression. Alternative splicing results in multiple transcript variants. Related pseudogenes have been identified on chromosomes 3 and 7.

## Recommended Dilutions

WB 1:500 - 1:2000

## Immunogen Information

### Gene ID

10061

### Swiss Prot

Q9UG63

### Immunogen

Recombinant fusion protein containing a sequence corresponding to amino acids 1-250 of human ABCF2 (NP\_005683.2).

### Synonyms

ABCF2;ABC28;EST133090;HUSY-18;HUSY18

## Contact

 | [www.abclonal.com](http://www.abclonal.com)

## Product Information

### Source

Rabbit

### Isotype

IgG

### Purification

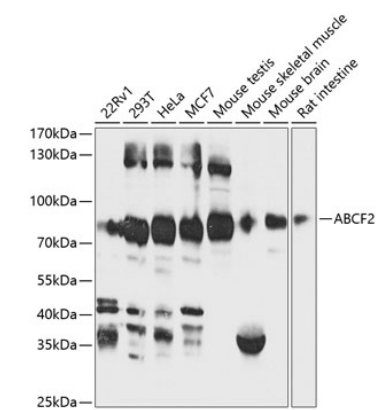
Affinity purification

### Storage

Store at -20°C. Avoid freeze / thaw cycles.

Buffer: PBS with 0.02% sodium azide, 50% glycerol, pH7.3.

# Validation Data



Western blot analysis of extracts of various cell lines, using ABCF2 antibody (A12555) at 1:1000 dilution.  
Secondary antibody: HRP Goat Anti-Rabbit IgG (H+L) (A5014) at 1:10000 dilution.  
Lysates/proteins: 25ug per lane.  
Blocking buffer: 3% nonfat dry milk in TBST.  
Detection: ECL Basic Kit (RM00020).  
Exposure time: 60s.