

Bim Rabbit pAb

Catalog No.: A12554 **1 Publications**

Basic Information

Observed MW

Calculated MW

4-22kDa

Category

Primary antibody

Applications

IHC

Cross-Reactivity

Human

Background

The protein encoded by this gene belongs to the BCL-2 protein family. BCL-2 family members form hetero- or homodimers and act as anti- or pro-apoptotic regulators that are involved in a wide variety of cellular activities. The protein encoded by this gene contains a Bcl-2 homology domain 3 (BH3). It has been shown to interact with other members of the BCL-2 protein family and to act as an apoptotic activator. The expression of this gene can be induced by nerve growth factor (NGF), as well as by the forkhead transcription factor FKHR-L1, which suggests a role of this gene in neuronal and lymphocyte apoptosis. Transgenic studies of the mouse counterpart suggested that this gene functions as an essential initiator of apoptosis in thymocyte-negative selection. Several alternatively spliced transcript variants of this gene have been identified.

Recommended Dilutions

IHC 1:50 - 1:100

Immunogen Information

Gene ID

10018

Swiss Prot

O43521

Immunogen

Recombinant fusion protein containing a sequence corresponding to amino acids 30-130 of human Bim (NP_619527.1).

Synonyms

BAM;BIM;BOD;Bim;BCL2L11

Contact

 | www.abclonal.com

Product Information

Source

Rabbit

Isotype

IgG

Purification

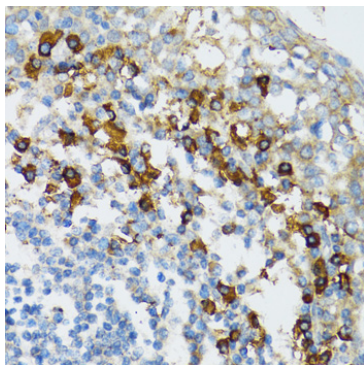
Affinity purification

Storage

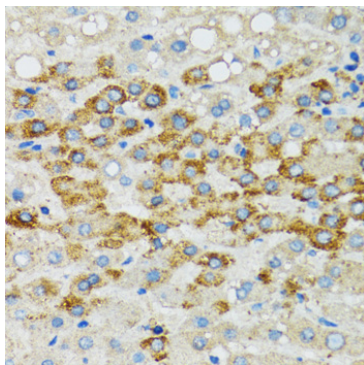
Store at -20°C. Avoid freeze / thaw cycles.

Buffer: PBS with 0.02% sodium azide, 50% glycerol, pH7.3.

Validation Data



Immunohistochemistry of paraffin-embedded human tonsil using BCL2L1 antibody (A12554) at dilution of 1:100 (40x lens). Perform microwave antigen retrieval with 10 mM PBS buffer pH 7.2 before commencing with IHC staining protocol.



Immunohistochemistry of paraffin-embedded human liver using BCL2L1 antibody (A12554) at dilution of 1:100 (40x lens). Perform microwave antigen retrieval with 10 mM PBS buffer pH 7.2 before commencing with IHC staining protocol.