

PLXNB1 Rabbit pAb

Catalog No.: A10010

Basic Information

Observed MW

232kDa

Calculated MW

78kDa/214kDa/232kDa

Category

Primary antibody

Applications

WB

Cross-Reactivity

Human, Mouse

Background

Receptor for SEMA4D. Plays a role in GABAergic synapse development (By similarity. Mediates SEMA4A- and SEMA4D-dependent inhibitory synapse development (By similarity. Plays a role in RHOA activation and subsequent changes of the actin cytoskeleton. Plays a role in axon guidance, invasive growth and cell migration.

Recommended Dilutions

WB 1:500 - 1:2000

Immunogen Information

Gene ID

5364

Swiss Prot

O43157

Immunogen

Recombinant fusion protein containing a sequence corresponding to amino acids 250-470 of human PLXNB1 (NP_002664.2).

Synonyms

PLXNB1; PLEXIN-B1; PLXN5; SEP; plexin-B1

Contact

 | www.abclonal.com

Product Information

Source

Rabbit

Isotype

IgG

Purification

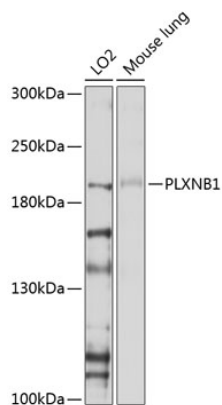
Affinity purification

Storage

Store at -20°C. Avoid freeze / thaw cycles.

Buffer: PBS with 0.02% sodium azide, 50% glycerol, pH7.3.

Validation Data



Western blot analysis of extracts of various cell lines, using PLXNB1 antibody (A10010) at 1:1000 dilution.

Secondary antibody: HRP Goat Anti-Rabbit IgG (H+L) (A5014) at 1:10000 dilution.

Lysates/proteins: 25ug per lane.

Blocking buffer: 3% nonfat dry milk in TBST.

Detection: ECL Basic Kit (RM00020).

Exposure time: 60s.