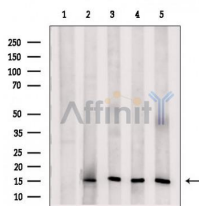


Histone H3 Ab

[Images\(2\)](#)

Cat.#: AF7835	Concn.: ~1mg/ml	Mol.Wt.: 15kDa
Size: 100ul,200ul,50ul	Source: Rabbit	Clonality: Polyclonal

Application:	WB 1:500-1:2000, ELISA(peptide) 1:20000-1:40000 *The optimal dilutions should be determined by the end user.
Reactivity:	Human,Mouse,Rat,Monkey
Purification:	The antiserum was purified by peptide affinity chromatography using SulfoLink™ Coupling Resin (Thermo Fisher Scientific).
Immunogen:	A synthesized peptide derived from human Histone H3, corresponding to a region within the internal amino acids.
Uniprot:	P68431
Storage:	Rabbit IgG in phosphate buffered saline , pH 7.4, 150mM NaCl, 0.02% sodium azide and 50% glycerol. Store at -20 °C. Stable for 12 months from date of receipt.



Western blot analysis of extracts from various samples, using Histone H3 Ab.
 Lane 1: VERO cells, treated with blocking peptide;
 Lane 2: VERO cells;
 Lane 3: RAW264.7 cells;
 Lane 4: HepG2 cells;
 Lane 5: EC304.

IMPORTANT: For western blot, incubate membrane with diluted primary Ab in 5% w/v milk , 1X TBS, 0.1% Tween@20 at 4°C with gentle shaking, overnight.

For Research Use Only. Not for use in diagnostic and therapeutic procedures. Not for resale without express authorization.