

## ABHD1 Ab

[Images\(4\)](#)

Cat.#: DF9140  
Size: 100ul, 200ul

Concn.: ~1mg/ml  
Source: Rabbit

Mol.Wt.: 45kDa  
Clonality: Polyclonal

Application: IF/ICC 1:100-1:500, IHC 1:50-1:200, WB 1:1000-3000, ELISA(peptide)  
1:20000-1:40000

\*The optimal dilutions should be determined by the end user.

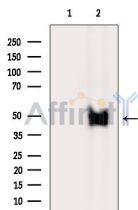
Reactivity: Human, Mouse, Rat

Purification: The antiserum was purified by peptide affinity chromatography using SulfoLink™ Coupling Resin (Thermo Fisher Scientific).

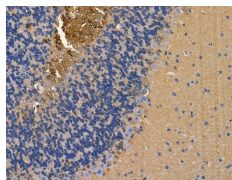
Immunogen: A synthesized peptide derived from human ABHD1, corresponding to a region within the internal amino acids.

Uniprot: Q96SE0

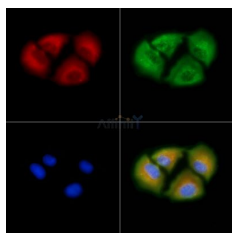
Storage: Rabbit IgG in phosphate buffered saline, pH 7.4, 150mM NaCl, 0.02% sodium azide and 50% glycerol. Store at -20 °C. Stable for 12 months from date of receipt.



Western blot analysis of extracts from MCF7 cells (serum starvation treatment), using ABHD1 Ab. The lane on the left was treated with blocking peptide.



DF9140 at 1/100 staining mouse brain tissue by IHC-P. The sample was formaldehyde fixed and a heat mediated antigen retrieval step in citrate buffer was performed. The sample was then blocked and incubated with the primary Ab at 4°C overnight. An HRP conjugated anti-rabbit Ab was used as the secondary Ab.



DF9140 staining A549 cells by IF/ICC. The samples were fixed with PFA and permeabilized in 0.1% Triton X-100, then blocked in 10% serum for 45 minutes at 25°C. Samples were then incubated with primary Ab (#DF9140) and mouse anti-beta tubulin Ab (#T0023) for 1 hour at 37°C. An AlexaFluor594 conjugated goat anti-rabbit IgG Ab (Red) and an AlexaFluor488 conjugated goat anti-mouse IgG Ab (Green) were used as the secondary Ab.

The nuclear counter stain is DAPI (blue).

**IMPORTANT:** For western blot, incubate membrane with diluted primary Ab in 5% w/v milk , 1X TBS, 0.1% Tween@20 at 4°C with gentle shaking, overnight.

For Research Use Only. Not for use in diagnostic and therapeutic procedures. Not for resale without express authorization.