

DNAJA1 Ab

[Images\(4\)](#)

Cat.#: DF8940
Size: 100ul,200ul

Concn.: ~1mg/ml
Source: Rabbit

Mol.Wt.: 44 kDa
Clonality: Polyclonal

Application: WB 1:1000-3000, IHC 1:50-1:200, IF/ICC 1:100-1:500, ELISA(peptide)
1:20000-1:40000

*The optimal dilutions should be determined by the end user.

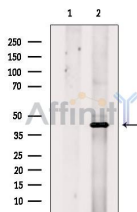
Reactivity: Human,Mouse,Rat

Purification: The antiserum was purified by peptide affinity chromatography using
SulfoLink™ Coupling Resin (Thermo Fisher Scientific).

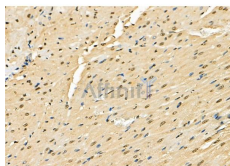
Immunogen: A synthesized peptide derived from human DNAJA1, corresponding to a
region within C-terminal amino acids.

Uniprot: P31689

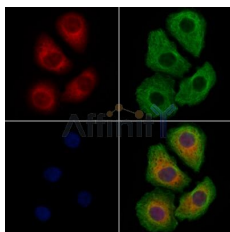
Storage: Rabbit IgG in phosphate buffered saline , pH 7.4, 150mM NaCl, 0.02%
sodium azide and 50% glycerol. Store at -20 °C. Stable for 12 months from
date of receipt.



Western blot analysis of extracts from Mouse kidney, using DNAJA1 Ab.
The lane on the left was treated with blocking peptide.



DF8940 at 1/100 staining Rat heart tissue by IHC-P. The sample was
formaldehyde fixed and a heat mediated antigen retrieval step in citrate buffer
was performed. The sample was then blocked and incubated with the primary
Ab at 4°C overnight. An HRP conjugated anti-Rabbit Ab was used as the
secondary Ab.



DF8940 staining HeLa cells by IF/ICC. The samples were fixed with PFA and
permeabilized in 0.1% Triton X-100, then blocked in 10% serum for 45
minutes at 25°C. Samples were then incubated with primary Ab(DF8940
1:200) and mouse anti-beta tubulin Ab(T0023 1:200) for 1 hour at 37°C. An
AlexaFluor594 conjugated goat anti-rabbit IgG(H+L) Ab(Red) and an
AlexaFluor488 conjugated goat anti-mouse IgG(H+L) Ab(Green) were used
as the secondary Ab.
The nuclear counter stain is DAPI(blue).

IMPORTANT: For western blot, incubate membrane with diluted primary Ab in 5% w/v milk , 1X TBS, 0.1% Tween@20 at 4°C with gentle shaking, overnight.

For Research Use Only. Not for use in diagnostic and therapeutic procedures. Not for resale without express authorization.