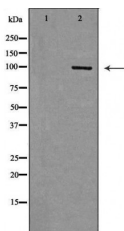


## TLR3 Ab

[References\(6\)](#) [Images\(6\)](#)

|                        |   |  |
|------------------------|---|--|
| Cat.#: DF6415          | Concn.: ~1mg/ml   | Mol.Wt.:<br>99kDa,130kd(Glycosylation) |
| Size: 100ul,200ul,50ul | Source: Rabbit  | Clonality: Polyclonal                  |
| Application:           | WB 1:500-1:2000, IHC 1:50-1:200, ELISA(peptide) 1:20000-1:40000<br>*The optimal dilutions should be determined by the end user.   |  |
| Reactivity:            | Human,Mouse,Rat   |  |
| Purification:          | The antiserum was purified by peptide affinity chromatography using SulfoLink™ Coupling Resin (Thermo Fisher Scientific).   |  |
| Immunogen:             | A synthesized peptide derived from human TLR3, corresponding to a region within C-terminal amino acids.   |  |
| Uniprot:               | O15455  |  |
| Description:           | Members of the Toll-like receptor (TLR) family, named for the closely related Toll receptor in Drosophila, play a pivotal role in innate immune responses (1-3). TLRs recognize conserved motifs found in various pathogens and mediate defense responses. Triggering of the TLR pathway leads to the activation of NF- $\kappa$ B and subsequent regulation of immune and inflammatory genes. The TLRs and members of the IL-1 receptor family share a conserved stretch of approximately 200 amino acids known as the TIR domain. |  |
| Storage:               | Rabbit IgG in phosphate buffered saline , pH 7.4, 150mM NaCl, 0.02% sodium azide and 50% glycerol. Store at -20 °C. Stable for 12 months from date of receipt.  |  |



Western blot analysis of extracts from Jurkat , using TLR3 Ab. The lane on the left was treated with the antigen-specific peptide.

**IMPORTANT:** For western blot, incubate membrane with diluted primary Ab in 5% w/v milk , 1X TBS, 0.1% Tween@20 at 4°C with gentle shaking, overnight.

For Research Use Only. Not for use in diagnostic and therapeutic procedures. Not for resale without express authorization.