

TCF4 Ab

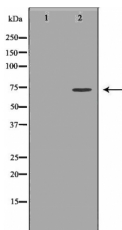
[References\(2\)](#) [Images\(2\)](#)

Cat.#: DF6275
Size: 100ul,200ul,50ul

Concn.: ~1mg/ml
Source: Rabbit

Mol.Wt.: 71kDa
Clonality: Polyclonal

Application:	WB 1:500-1:2000, IHC 1:50-1:200, ELISA(peptide) 1:20000-1:40000 *The optimal dilutions should be determined by the end user.
Reactivity:	Human,Mouse,Rat
Storage:	Rabbit IgG in phosphate buffered saline , pH 7.4, 150mM NaCl, 0.02% sodium azide and 50% glycerol. Store at -20 °C. Stable for 12 months from date of receipt.
Purification:	The antiserum was purified by peptide affinity chromatography using SulfoLink™ Coupling Resin (Thermo Fisher Scientific).
Immunogen:	A synthesized peptide derived from human TCF4, corresponding to a region within N-terminal amino acids.
Uniprot:	P15884
Description:	LEF1 and TCF are members of the high mobility group (HMG) DNA binding protein family of transcription factors that consists of the following: Lymphoid Enhancer Factor 1 (LEF1), T Cell Factor 1 (TCF1), TCF3, and TCF4 . LEF1 and TCF1 were originally identified as important factors regulating early lymphoid development and act downstream in Wnt signaling. LEF1 and TCF bind to Wnt response elements to provide docking sites for β -catenin, which translocates to the nucleus to promote the transcription of target genes upon activation of Wnt signaling . LEF1 and TCF are dynamically expressed during development and aberrant activation of the Wnt signaling pathway is involved in many types of cancers including colon cancer (4,5).



Western blot analysis of K562 lysates using TCF4 Ab. The lane on the left was treated with the antigen-specific peptide.

IMPORTANT: For western blot, incubate membrane with diluted primary Ab in 5% w/v milk , 1X TBS, 0.1% Tween@20 at 4°C with gentle shaking, overnight.

procedures. Not for resale without express authorization.