

## 4E-BP1 Ab

[Images\(1\)](#)

Cat.#: AF7876  
Size: 100ul,200ul,50ul

Concn.: ~1mg/ml  
Source: Rabbit

Mol.Wt.: 12kDa  
Clonality: Polyclonal

Application: WB 1:500-1:2000, ELISA(peptide) 1:20000-1:40000  
\*The optimal dilutions should be determined by the end user.

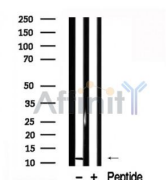
Reactivity: Human,Mouse,Rat

Purification: The antiserum was purified by peptide affinity chromatography using SulfoLink™ Coupling Resin (Thermo Fisher Scientific).

Immunogen: A synthesized peptide derived from human 4E-BP1, corresponding to a region within the internal amino acids.

Uniprot: Q13541

Storage: Rabbit IgG in phosphate buffered saline , pH 7.4, 150mM NaCl, 0.02% sodium azide and 50% glycerol. Store at -20 °C. Stable for 12 months from date of receipt.



Western blot analysis of 4E-BP1 in lysates of Jurkat , using 4E-BP1 Ab(AF7876).

**IMPORTANT:** For western blot, incubate membrane with diluted primary Ab in 5% w/v milk , 1X TBS, 0.1% Tween@20 at 4°C with gentle shaking, overnight.

For Research Use Only. Not for use in diagnostic and therapeutic procedures. Not for resale without express authorization.