

Phospho-CD130/gp130 (Ser782) Ab

[Images\(3\)](#)

Cat.#: AF8038
Size: 100ul, 200ul

Concn.: ~1mg/ml
Source: Rabbit

Mol.Wt.: 160kDa
Clonality: Polyclonal

Application: WB 1:1000-3000, IHC 1:50-1:200, ELISA(peptide) 1:20000-1:40000
*The optimal dilutions should be determined by the end user.

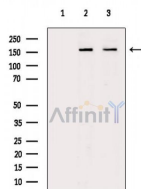
Reactivity: Human, Mouse

Purification: The Ab is from purified rabbit serum by affinity purification via sequential chromatography on phospho-peptide and non-phospho-peptide affinity columns.

Immunogen: A synthesized peptide derived from human CD130/gp130 around the phosphorylation site of Ser782.

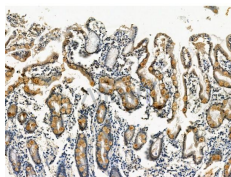
Uniprot: P40189

Storage: Rabbit IgG in phosphate buffered saline , pH 7.4, 150mM NaCl, 0.02% sodium azide and 50% glycerol. Store at -20 °C. Stable for 12 months from date of receipt.



Western blot analysis of extracts from various samples, using Phospho-CD130/gp130 (Ser782) Ab.

Lane 1: Raji cells(UV treatment), blocked with antigen-specific peptides,
Lane 2: Raji cells(UV treatment),
Lane 3: 293 cells(heat-shock treatment).



AF8038 at 1/100 staining Human gastric cancer and adjacent normal tissues by IHC-P. The sample was formaldehyde fixed and a heat mediated antigen retrieval step in citrate buffer was performed. The sample was then blocked and incubated with the primary Ab at 4°C overnight. An HRP conjugated anti-Rabbit Ab was used as the secondary Ab.

IMPORTANT: For western blot, incubate membrane with diluted primary Ab in 5% w/v milk , 1X TBS, 0.1% Tween@20 at 4°C with gentle shaking, overnight.

For Research Use Only. Not for use in diagnostic and therapeutic procedures. Not for resale without express authorization.