

RBAK Ab

[Images\(1\)](#)

Cat.#: AF0422
Size: 100ul, 200ul, 50ul

Concn.: ~1mg/ml
Source: Rabbit

Mol.Wt.: 85kDa
Clonality: Polyclonal

Application: WB 1:500-1:2000, IF/ICC 1:100-1:500, ELISA(peptide) 1:20000-1:40000
*The optimal dilutions should be determined by the end user.

Reactivity: Human, Mouse, Rat

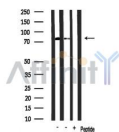
Purification: The antiserum was purified by peptide affinity chromatography using SulfoLink™ Coupling Resin (Thermo Fisher Scientific).

Immunogen: A synthesized peptide derived from human RBAK, corresponding to a region within N-terminal amino acids.

Uniprot: Q9NYW8

Description: RBAK May repress E2F-dependent transcription. May promote AR-dependent transcription. Belongs to the krueppel C2H2-type zinc-finger protein family. Interacts with AR and RB1. May also interact with other nuclear hormone receptors such as NR3C1/GR.

Storage: Rabbit IgG in phosphate buffered saline, pH 7.4, 150mM NaCl, 0.02% sodium azide and 50% glycerol. Store at -20 °C. Stable for 12 months from date of receipt.



Western blot analysis of extracts from various samples, using RBAK Ab.

Lane 1: Rat brain lysates;

Lane 2: Mouse lung lysates;

Lane 3: Mouse lung lysates treated with blocking peptide;

IMPORTANT: For western blot, incubate membrane with diluted primary Ab in 5% w/v milk, 1X TBS, 0.1% Tween@20 at 4°C with gentle shaking, overnight.

For Research Use Only. Not for use in diagnostic and therapeutic procedures. Not for resale without express authorization.