

## Histone H3 Ab

[Images\(3\)](#)

Cat.#: AF4665	Concn.: ~1mg/ml	Mol.Wt.: 17kDa
Size: 100ul,200ul,50ul	Source: Rabbit	Clonality: Polyclonal

**Application:** WB 1:500-1:2000, ELISA(peptide) 1:20000-1:40000  
\*The optimal dilutions should be determined by the end user.

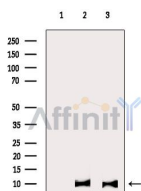
**Reactivity:** Human,Mouse,Rat

**Storage:** Rabbit IgG in phosphate buffered saline , pH 7.4, 150mM NaCl, 0.02% sodium azide and 50% glycerol. Store at -20 °C. Stable for 12 months from date of receipt.

**Purification:** The antiserum was purified by peptide affinity chromatography using SulfoLink™ Coupling Resin (Thermo Fisher Scientific).

**Immunogen:** A synthesized peptide derived from human Histone H3, corresponding to a region within N-terminal amino acids.

**Uniprot:** P68431/Q71DI3/P84243



Western blot analysis of extracts from various samples, using Histone H3 Ab.  
Lane 1: Hepg2 cells(h2o2 treatment), blocked with antigen-specific peptides.  
Lane 2: Hepg2 cells(h2o2 treatment).  
Lane 3: Raw264.7 cells(uv treatment).

**IMPORTANT:** For western blot, incubate membrane with diluted primary Ab in 5% w/v milk , 1X TBS, 0.1% Tween@20 at 4°C with gentle shaking, overnight.

For Research Use Only. Not for use in diagnostic and therapeutic procedures. Not for resale without express authorization.