

RPL10 Ab

[Images\(1\)](#)

Cat.#: AF0293
Size: 100ul, 200ul, 50ul

Concn.: ~1mg/ml
Source: Rabbit

Mol.Wt.: 25kDa
Clonality: Polyclonal

Application: WB 1:500-1:3000, IF/ICC 1:100-1:500, ELISA(peptide) 1:20000-1:40000
*The optimal dilutions should be determined by the end user.

Reactivity: Human, Mouse, Rat

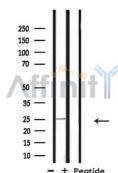
Storage: Rabbit IgG in phosphate buffered saline, pH 7.4, 150mM NaCl, 0.02% sodium azide and 50% glycerol. Store at -20 °C. Stable for 12 months from date of receipt.

Purification: The antiserum was purified by peptide affinity chromatography using SulfoLink™ Coupling Resin (Thermo Fisher Scientific).

Immunogen: A synthesized peptide derived from human RPL10, corresponding to a region within N-terminal amino acids.

Uniprot: P27635

Description: RPL10 belongs to the ribosomal protein L10e family. Component of the large ribosomal subunit. Mature ribosomes consist of a small (40S) and a large (60S) subunit. The 40S subunit contains about 33 different proteins and 1 molecule of RNA (18S).



Western blot analysis of extracts from mouse brain, using RPL10 Ab.

IMPORTANT: For western blot, incubate membrane with diluted primary Ab in 5% w/v milk, 1X TBS, 0.1% Tween@20 at 4°C with gentle shaking, overnight.

For Research Use Only. Not for use in diagnostic and therapeutic procedures. Not for resale without express authorization.