

Phospho-SF3B1 (Thr211) Ab

[Images\(5\)](#)

Cat.#: AF7153
Size: 100ul, 200ul

Concn.: ~1mg/ml
Source: Rabbit

Mol.Wt.: 145kDa
Clonality: Polyclonal

Application: WB 1:500-1:2000, IHC 1:50-1:200, ELISA(peptide) 1:20000-1:40000
*The optimal dilutions should be determined by the end user.

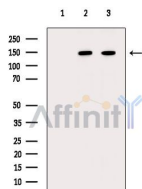
Reactivity: Human, Mouse, Rat

Purification: The Ab is from purified rabbit serum by affinity purification via sequential chromatography on phospho-peptide and non-phospho-peptide affinity columns.

Immunogen: A synthesized peptide derived from human SF3B1 around the phosphorylation site of Thr211.

Uniprot: O75533

Storage: Rabbit IgG in phosphate buffered saline, pH 7.4, 150mM NaCl, 0.02% sodium azide and 50% glycerol. Store at -20 °C. Stable for 12 months from date of receipt.

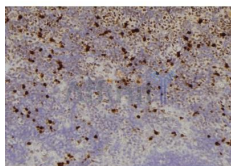


Western blot analysis of extracts from various samples, using Phospho-SF3B1 (Thr211) Ab.

Lane 1: Mc-3t3-e1 cells (h2o2 treatment), blocked with antigen-specific peptides.

Lane 2: Mc-3t3-e1 cells (h2o2 treatment).

Lane 3: Raw264.7 cells.



AF7153 at 1/100 staining mouse liver cancer tissue sections by IHC-P. The tissue was formaldehyde fixed and a heat mediated antigen retrieval step in citrate buffer was performed. The tissue was then blocked and incubated with the Ab for 1.5 hours at 22°C. An HRP conjugated goat anti-rabbit Ab was used as the secondary Ab.

IMPORTANT: For western blot, incubate membrane with diluted primary Ab in 5% w/v milk, 1X TBS, 0.1% Tween@20 at 4°C with gentle shaking, overnight.

For Research Use Only. Not for use in diagnostic and therapeutic procedures. Not for resale without express authorization.