

## hnRPD Ab

[Images\(2\)](#)

Cat.#: AF0092  
Size: 100ul, 200ul, 50ul

Concn.: ~1mg/ml  
Source: Rabbit

Mol.Wt.: 38kDa  
Clonality: Polyclonal

Application: WB 1:500-1:3000, IHC 1:50-1:200, IF/ICC: 1:100-1:500, ELISA(peptide) 1:20000-1:40000

\*The optimal dilutions should be determined by the end user.

Reactivity: Human, Mouse, Rat

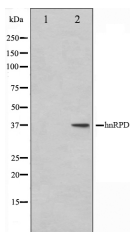
Storage: Rabbit IgG in phosphate buffered saline, pH 7.4, 150mM NaCl, 0.02% sodium azide and 50% glycerol. Store at -20 °C. Stable for 12 months from date of receipt.

Purification: The antiserum was purified by peptide affinity chromatography using SulfoLink™ Coupling Resin (Thermo Fisher Scientific).

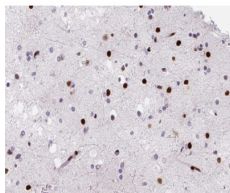
Immunogen: A synthesized peptide derived from human hnRPD, corresponding to a region within the internal amino acids.

Uniprot: Q14103

Description: hnRNP D0 a ubiquitously expressed heterogeneous nuclear ribonucleoprotein (hnRNP). Implicated in the regulation of mRNA stability. Has two repeats of quasi-RRM domains that bind to RNAs. It localizes to both the nucleus and the cytoplasm. Four alternatively spliced transcript variants have been described.



Western blot analysis on HuvEc cell lysates using hnRPD Ab. The lane on the left was treated with the antigen-specific peptide.



AF0092 at 1/200 staining human brain tissue sections by IHC-P. The tissue was formaldehyde fixed and a heat mediated antigen retrieval step in citrate buffer was performed. The tissue was then blocked and incubated with the Ab for 1.5 hours at 22°C. An HRP conjugated goat anti-rabbit Ab was used as the secondary Ab.

---

in 5% w/v milk , 1X TBS, 0.1% Tween@20 at 4°C with gentle shaking,  
overnight.

---

For Research Use Only. Not for use in diagnostic and therapeutic  
procedures. Not for resale without express authorization.