

# Phospho-Connexin 43-S368 Rabbit pAb

Catalog No.: AP0355

## Basic Information

**Observed MW**

35kDa

**Calculated MW**

43kDa

**Category**

Primary antibody

**Applications**

WB,IHC

**Cross-Reactivity**

Human, Mouse, Rat

## Background

This gene is a member of the connexin gene family. The encoded protein is a component of gap junctions, which are composed of arrays of intercellular channels that provide a route for the diffusion of low molecular weight materials from cell to cell. The encoded protein is the major protein of gap junctions in the heart that are thought to have a crucial role in the synchronized contraction of the heart and in embryonic development. A related intronless pseudogene has been mapped to chromosome 5. Mutations in this gene have been associated with oculodentodigital dysplasia, autosomal recessive craniometaphyseal dysplasia and heart malformations.

## Recommended Dilutions

<b>WB</b>	1:500 - 1:2000
<b>IHC</b>	1:50 - 1:100

## Immunogen Information

<b>Gene ID</b>	<b>Swiss Prot</b>
2697	P17302

**Immunogen**

A synthetic phosphorylated peptide around S368 of human GJA1 (NP\_000156.1).

**Synonyms**

GJA1;AVSD3;CMDR;CX43;EKVP;GJAL;HLHS1;HSS;ODDD;PPKCA;EKVP3

## Contact

 | [www.abclonal.com](http://www.abclonal.com)

## Product Information

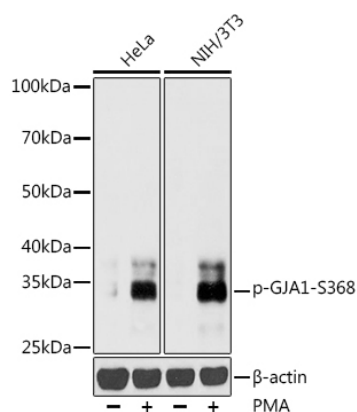
<b>Source</b>	<b>Isotype</b>	<b>Purification</b>
Rabbit	IgG	Affinity purification

**Storage**

Store at -20°C. Avoid freeze / thaw cycles.

Buffer: PBS with 0.01% thiomersal, 50% glycerol, pH7.3.

## Validation Data



Western blot analysis of extracts of various cell lines, using Phospho-Connexin 43-S368 antibody (AP0355) at 1:1000 dilution. HeLa cells were treated by PMA/TPA (200 nM) at 37°C for 30 minutes after serum-starvation overnight. NIH/3T3 cells were treated by PMA/TPA (200 nM) at 37°C for 30 minutes after serum-starvation overnight.

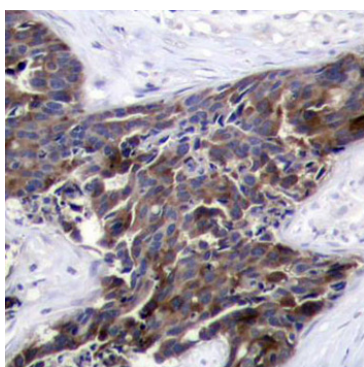
Secondary antibody: HRP Goat Anti-Rabbit IgG (H+L) (AS014) at 1:10000 dilution.

Lysates/proteins: 25ug per lane.

Blocking buffer: 3% nonfat dry milk in TBST.

Detection: ECL Basic Kit (RM00020).

Exposure time: 10s.



Immunohistochemistry of paraffin-embedded human breast carcinoma using Phospho-Connexin 43-S368 antibody (AP0355). Perform microwave antigen retrieval with 10 mM Tris/EDTA buffer pH 9.0 before commencing with IHC staining protocol.