

Beclin 1 Rabbit pAb

Catalog No.: A7353 **68 Publications**

Basic Information

Observed MW

60KDa

Calculated MW

51kDa

Category

Primary antibody

Applications

WB,IP

Cross-Reactivity

Human, Mouse, Rat

Background

This gene encodes a protein that regulates autophagy, a catabolic process of degradation induced by starvation. The encoded protein is a component of the phosphatidylinositol-3-kinase (PI3K) complex which mediates vesicle-trafficking processes. This protein is thought to play a role in multiple cellular processes, including tumorigenesis, neurodegeneration and apoptosis. Alternative splicing results in multiple transcript variants.

Recommended Dilutions

WB	1:500 - 1:2000
IP	1:50 - 1:200

Immunogen Information

Gene ID	Swiss Prot
8678	Q14457

Immunogen

Recombinant fusion protein containing a sequence corresponding to amino acids 25-280 of human Beclin 1 (NP_003757.1).

Synonyms

ATG6;VPS30;beclin1;Beclin 1;BECN1;beclin-1

Contact

 | www.abclonal.com

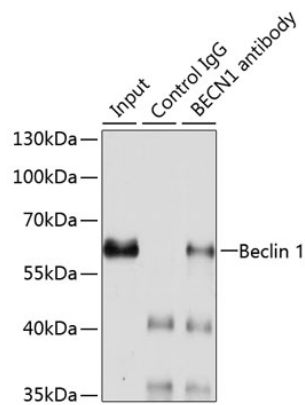
Product Information

Source	Isotype	Purification
Rabbit	IgG	Affinity purification

Storage

Store at -20°C. Avoid freeze / thaw cycles.
Buffer: PBS with 0.02% sodium azide,50% glycerol,pH7.3.

Validation Data



Immunoprecipitation analysis of 200ug extracts of HeLa cells using 3ug Beclin 1 antibody (A7353). Western blot was performed from the immunoprecipitate using Beclin 1 antibody (A7353) at a dilution of 1:1000.