

MGP Rabbit pAb

Catalog No.: A5439

Basic Information

Observed MW

12KDa

Calculated MW

12kDa/15kDa

Category

Primary antibody

Applications

WB, IHC, IF/ICC

Cross-Reactivity

Human, Mouse, Rat

Background

The protein encoded by this gene is secreted and likely acts as an inhibitor of bone formation. The encoded protein is found in the organic matrix of bone and cartilage. Defects in this gene are a cause of Keutel syndrome (KS). Two transcript variants encoding different isoforms have been found for this gene.

Recommended Dilutions

WB	1:500 - 1:2000
IHC	1:100 - 1:200
IF/ICC	1:50 - 1:200

Immunogen Information

Gene ID

4256

Swiss Prot

P08493

Immunogen

Recombinant fusion protein containing a sequence corresponding to amino acids 20-103 of human MGP (NP_000891.2).

Synonyms

MGP;GIG36;MGLAP;NTI

Contact

 | www.abclonal.com

Product Information

Source

Rabbit

Isotype

IgG

Purification

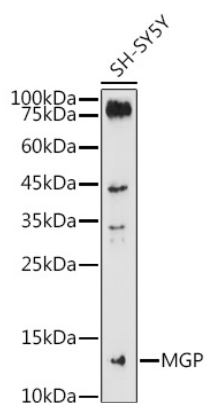
Affinity purification

Storage

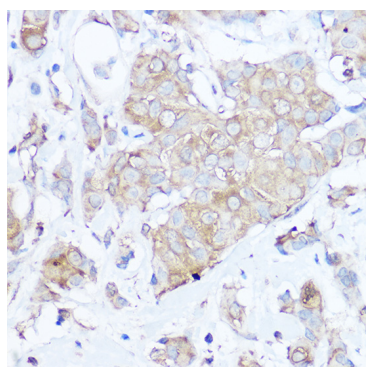
Store at -20°C. Avoid freeze / thaw cycles.

Buffer: PBS with 0.05% proclin300,50% glycerol,pH7.3.

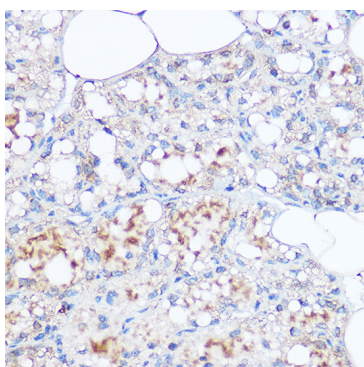
Validation Data



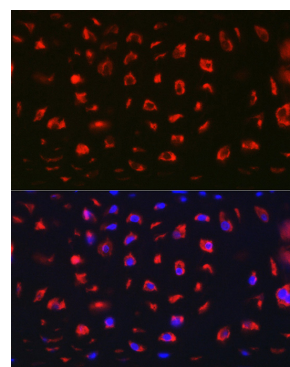
Western blot analysis of extracts of SH-SY5Y cells, using MGP antibody (A5439) at 1:1000 dilution.
 Secondary antibody: HRP Goat Anti-Rabbit IgG (H+L) (A5014) at 1:10000 dilution.
 Lysates/proteins: 25ug per lane.
 Blocking buffer: 3% nonfat dry milk in TBST.
 Detection: ECL Basic Kit (RM00020).
 Exposure time: 180s.



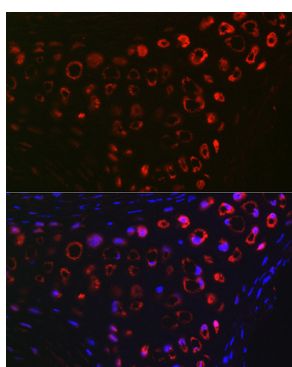
Immunohistochemistry of paraffin-embedded human breast cancer using MGP Rabbit pAb (A5439) at dilution of 1:100 (40x lens). Perform high pressure antigen retrieval with 10 mM citrate buffer pH 6.0 before commencing with IHC staining protocol.



Immunohistochemistry of paraffin-embedded rat breast using MGP Rabbit pAb (A5439) at dilution of 1:100 (40x lens). Perform high pressure antigen retrieval with 10 mM citrate buffer pH 6.0 before commencing with IHC staining protocol.



Immunofluorescence analysis of Rat cartilage using MGP Rabbit pAb (A5439) at dilution of 1:100 (40x lens). Blue: DAPI for nuclear staining.



Immunofluorescence analysis of Mouse cartilage using MGP Rabbit pAb (A5439) at dilution of 1:100 (40x lens). Blue: DAPI for nuclear staining.