

EIF4A2 Rabbit pAb

Catalog No.: A3849

Basic Information

Observed MW

46kDa

Calculated MW

46kDa

Category

Primary antibody

Applications

WB

Cross-Reactivity

Human, Mouse, Rat

Background

ATP-dependent RNA helicase which is a subunit of the eIF4F complex involved in cap recognition and is required for mRNA binding to ribosome. In the current model of translation initiation, eIF4A unwinds RNA secondary structures in the 5'-UTR of mRNAs which is necessary to allow efficient binding of the small ribosomal subunit, and subsequent scanning for the initiator codon.

Recommended Dilutions

WB 1:500 - 1:1000

Immunogen Information

Gene ID

1974

Swiss Prot

Q14240

Immunogen

Recombinant fusion protein containing a sequence corresponding to amino acids 1-270 of human EIF4A2 (NP_001958.2).

Synonyms

EIF4A2; BM-010; DDX2B; EIF4A; EIF4F; eIF-4A-II; eIF4A-II

Contact

 | www.abclonal.com

Product Information

Source

Rabbit

Isotype

IgG

Purification

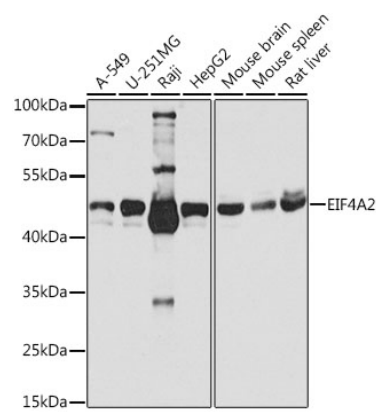
Affinity purification

Storage

Store at -20°C. Avoid freeze / thaw cycles.

Buffer: PBS with 0.02% sodium azide, 50% glycerol, pH7.3.

Validation Data



Western blot analysis of extracts of various cell lines, using EIF4A2 antibody (A3849) at 1:1000 dilution.
Secondary antibody: HRP Goat Anti-Rabbit IgG (H+L) (A5014) at 1:10000 dilution.
Lysates/proteins: 25ug per lane.
Blocking buffer: 3% nonfat dry milk in TBST.
Detection: ECL Basic Kit (RM00020).
Exposure time: 10s.