

# GSK3 $\beta$ Rabbit pAb

Catalog No.: A2081 **13 Publications**

## Basic Information

**Observed MW**

46kDa

**Calculated MW**

46kDa/48kDa

**Category**

Primary antibody

**Applications**

WB,IHC,IF/ICC,IP

**Cross-Reactivity**

Human, Mouse, Rat

## Background

The protein encoded by this gene is a serine-threonine kinase, belonging to the glycogen synthase kinase subfamily. It is involved in energy metabolism, neuronal cell development, and body pattern formation. Polymorphisms in this gene have been implicated in modifying risk of Parkinson disease, and studies in mice show that overexpression of this gene may be relevant to the pathogenesis of Alzheimer disease. Alternatively spliced transcript variants encoding different isoforms have been found for this gene.

## Recommended Dilutions

<b>WB</b>	1:500 - 1:2000
<b>IHC</b>	1:50 - 1:200
<b>IF/ICC</b>	1:50 - 1:200
<b>IP</b>	1:50 - 1:200

## Immunogen Information

**Gene ID**

2932

**Swiss Prot**

P49841

**Immunogen**

Recombinant fusion protein containing a sequence corresponding to amino acids 350-420 of GSK3 $\beta$  (NP\_001139628.1).

**Synonyms**GSK3B;gsk-3 $\beta$ 

## Contact

 | [www.abclonal.com](http://www.abclonal.com)

## Product Information

**Source**

Rabbit

**Isotype**

IgG

**Purification**

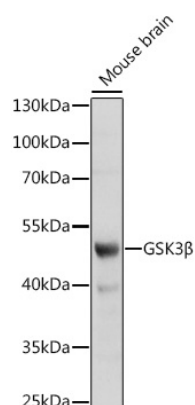
Affinity purification

**Storage**

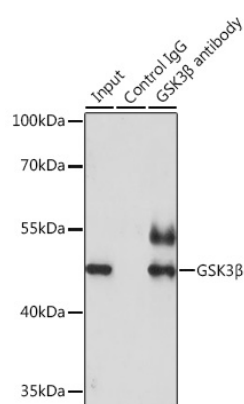
Store at -20°C. Avoid freeze / thaw cycles.

Buffer: PBS with 0.02% sodium azide,50% glycerol,pH7.3.

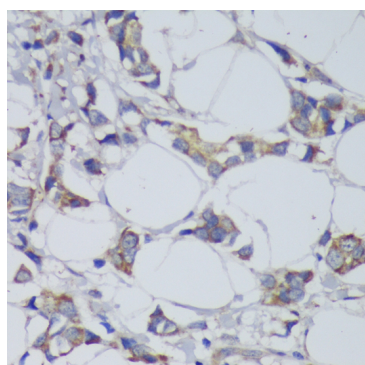
## Validation Data



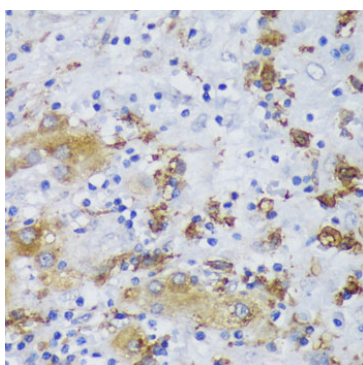
Western blot analysis of extracts of mouse brain, using GSK3 $\beta$  antibody (A2081) at 1:1000 dilution.  
Secondary antibody: HRP Goat Anti-Rabbit IgG (H+L) (A5014) at 1:10000 dilution.  
Lysates/proteins: 25ug per lane.  
Blocking buffer: 3% nonfat dry milk in TBST.  
Detection: ECL Basic Kit (RM00020).  
Exposure time: 90s.



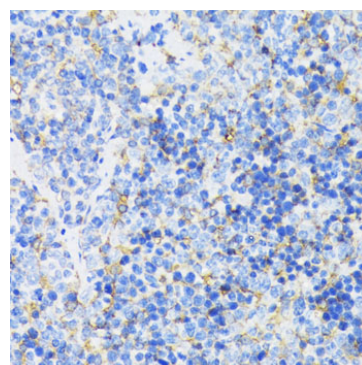
Immunoprecipitation analysis of 200ug extracts of HeLa cells using 3ug GSK3 $\beta$  antibody (A2081).  
Western blot was performed from the immunoprecipitate using GSK3 $\beta$  antibody (A2081) at a dilution of 1:1000.



Immunohistochemistry of paraffin-embedded human mammary cancer using GSK3 $\beta$  antibody (A2081) at dilution of 1:200 (40x lens). Perform microwave antigen retrieval with 10 mM PBS buffer pH 7.2 before commencing with IHC staining protocol.



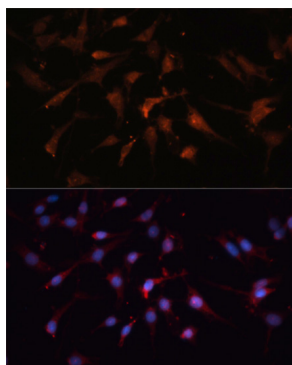
Immunohistochemistry of paraffin-embedded human liver cancer using GSK3 $\beta$  antibody (A2081) at dilution of 1:200 (40x lens). Perform microwave antigen retrieval with 10 mM PBS buffer pH 7.2 before commencing with IHC staining protocol.



Immunohistochemistry of paraffin-embedded mouse spleen using GSK3 $\beta$  antibody (A2081) at dilution of 1:200 (40x lens). Perform microwave antigen retrieval with 10 mM PBS buffer pH 7.2 before commencing with IHC staining protocol.

## Validation Data

---



Immunofluorescence analysis of C6 cells using GSK3 $\beta$  antibody (A2081) at dilution of 1:100. Blue: DAPI for nuclear staining.