

LPAR2 Rabbit pAb

Catalog No.: A14819

Basic Information

Observed MW

38kDa

Calculated MW

39kDa

Category

Primary antibody

Applications

WB

Cross-Reactivity

Human

Background

This gene encodes a member of family I of the G protein-coupled receptors, as well as the EDG family of proteins. This protein functions as a lysophosphatidic acid (LPA) receptor and contributes to Ca^{2+} mobilization, a critical cellular response to LPA in cells, through association with Gi and Gq proteins. An alternative splice variant has been described but its full length sequence has not been determined.

Recommended Dilutions

WB 1:500 - 1:2000

Immunogen Information

Gene ID

9170

Swiss Prot

Q9HBW0

Immunogen

A synthetic peptide corresponding to a sequence within amino acids 250-350 of human LPAR2 (NP_004711.2).

Synonyms

LPAR2;EDG-4;EDG4;LPA-2;LPA2

Contact

 | www.abclonal.com

Product Information

Source

Rabbit

Isotype

IgG

Purification

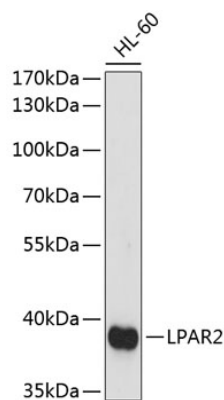
Affinity purification

Storage

Store at -20°C. Avoid freeze / thaw cycles.

Buffer: PBS with 0.01% thiomersal, 50% glycerol, pH7.3.

Validation Data



Western blot analysis of extracts of HL-60 cells, using LPAR2 antibody (A14819) at 1:1000 dilution.
Secondary antibody: HRP Goat Anti-Rabbit IgG (H+L) (A5014) at 1:10000 dilution.
Lysates/proteins: 25ug per lane.
Blocking buffer: 3% nonfat dry milk in TBST.
Detection: ECL Basic Kit (RM00020).
Exposure time: 90s.