

# TRIM21/SS-A Rabbit pAb

Catalog No.: A13547 **1 Publications**

## Basic Information

### Observed MW

50KDa

### Calculated MW

45kDa/54kDa

### Category

Primary antibody

### Applications

WB,IHC,IF/ICC,IP

### Cross-Reactivity

Human, Mouse, Rat

## Background

This gene encodes a member of the tripartite motif (TRIM) family. The TRIM motif includes three zinc-binding domains, a RING, a B-box type 1 and a B-box type 2, and a coiled-coil region. The encoded protein is part of the RoSSA ribonucleoprotein, which includes a single polypeptide and one of four small RNA molecules. The RoSSA particle localizes to both the cytoplasm and the nucleus. RoSSA interacts with autoantigens in patients with Sjogren syndrome and systemic lupus erythematosus. Alternatively spliced transcript variants for this gene have been described but the full-length nature of only one has been determined.

## Recommended Dilutions

<b>WB</b>	1:500 - 1:2000
<b>IHC</b>	1:50 - 1:200
<b>IF/ICC</b>	1:50 - 1:200
<b>IP</b>	1:50 - 1:200

## Immunogen Information

### Gene ID

6737

### Swiss Prot

P19474

### Immunogen

Recombinant fusion protein containing a sequence corresponding to amino acids 86-334 of human TRIM21/SS-A (NP\_003132.2).

### Synonyms

TRIM21;RNF81;RO52;Ro/SSA;SSA;SSA1

## Contact

 | [www.abclonal.com](http://www.abclonal.com)

## Product Information

### Source

Rabbit

### Isotype

IgG

### Purification

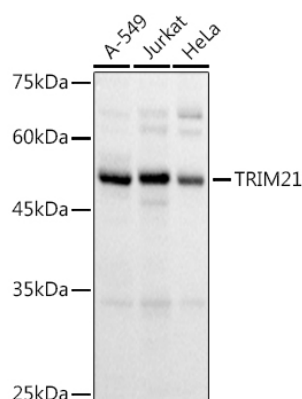
Affinity purification

### Storage

Store at -20°C. Avoid freeze / thaw cycles.

Buffer: PBS with 0.05% proclin300,50% glycerol,pH7.3.

## Validation Data



Western blot analysis of extracts of various cell lines, using TRIM21/SS-A antibody (A13547) at 1:1000 dilution.

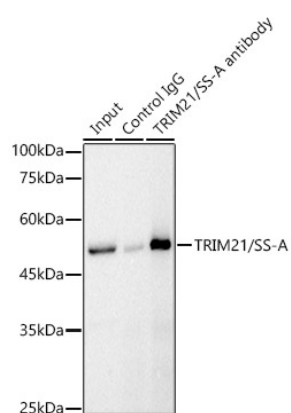
Secondary antibody: HRP Goat Anti-Rabbit IgG (H+L) (A5014) at 1:10000 dilution.

Lysates/proteins: 25ug per lane.

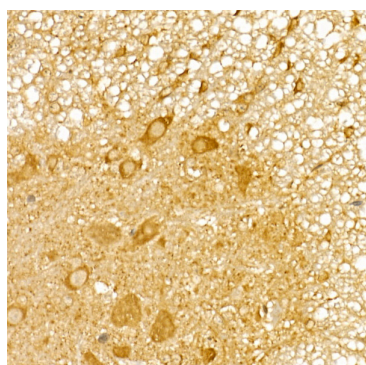
Blocking buffer: 3% nonfat dry milk in TBST.

Detection: ECL Basic Kit (RM00020).

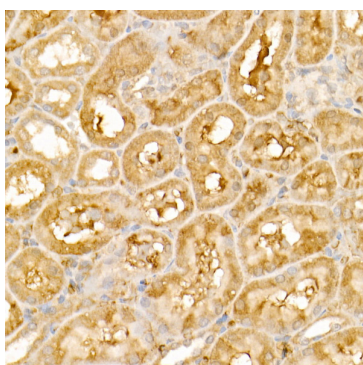
Exposure time: 3s.



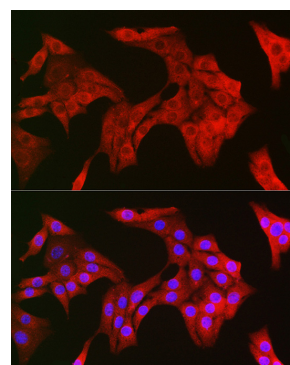
Immunoprecipitation analysis of 300ug extracts of Jurkat cells using 3ug TRIM21/SS-A Rabbit antibody (A13547). Western blot was performed from the immunoprecipitate using TRIM21/SS-A Rabbit antibody (A13547) at a dilution of 1:1000.



Immunohistochemistry of paraffin-embedded mouse spinal cord using TRIM21/SS-A Rabbit pAb (A13547) at dilution of 1:50 (40x lens). Perform high pressure antigen retrieval with 10 mM citrate buffer pH 6.0 before commencing with IHC staining protocol.



Immunohistochemistry of paraffin-embedded rat kidney using TRIM21/SS-A Rabbit pAb (A13547) at dilution of 1:50 (40x lens). Perform high pressure antigen retrieval with 10 mM citrate buffer pH 6.0 before commencing with IHC staining protocol.



Immunofluorescence analysis of NIH/3T3 cells using TRIM21/SS-A Rabbit pAb (A13547) at dilution of 1:150 (40x lens). Blue: DAPI for nuclear staining.