

Phospho-PKCdelta-T505 Rabbit pAb

Catalog No.: AP0776

Basic Information

Observed MW

77kDa

Calculated MW

77kDa/80kDa

Category

Primary antibody

Applications

WB

Cross-Reactivity

Human

Background

Protein kinase C (PKC) is a family of serine- and threonine-specific protein kinases that can be activated by calcium and the second messenger diacylglycerol. PKC family members phosphorylate a wide variety of protein targets and are known to be involved in diverse cellular signaling pathways. PKC family members also serve as major receptors for phorbol esters, a class of tumor promoters. Each member of the PKC family has a specific expression profile and is believed to play distinct roles in cells. The protein encoded by this gene is one of the PKC family members. Studies both in human and mice demonstrate that this kinase is involved in B cell signaling and in the regulation of growth, apoptosis, and differentiation of a variety of cell types. Alternatively spliced transcript variants encoding the same protein have been observed.

Recommended Dilutions

WB 1:500 - 1:2000

Immunogen Information

Gene ID

5580

Swiss Prot

Q05655

Immunogen

A synthetic phosphorylated peptide around T505 of human PKCdelta (NP_006245.2).

Synonyms

PRKCD;ALPS3;CVID9;MAY1;PKCD;nPKC-delta;PKCδ

Contact

 | www.abclonal.com

Product Information

Source

Rabbit

Isotype

IgG

Purification

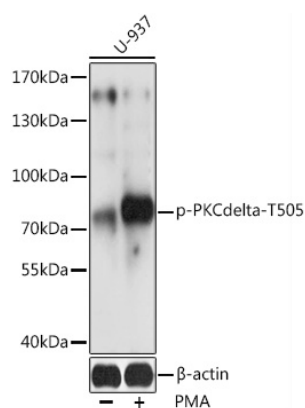
Affinity purification

Storage

Store at -20°C. Avoid freeze / thaw cycles.

Buffer: PBS with 0.01% thiomersal, 50% glycerol, pH7.3.

Validation Data



Western blot analysis of extracts of U-937 cells, using Phospho-PKCdelta-T505 antibody (AP0776) at 1:2000 dilution. U-937 cells were treated by PMA/TPA (200nM) for 30 minutes.

Secondary antibody: HRP Goat Anti-Rabbit IgG (H+L) (AS014) at 1:10000 dilution.

Lysates/proteins: 25ug per lane.

Blocking buffer: 3% BSA.

Detection: ECL Basic Kit (RM00020).

Exposure time: 60s.