

Phospho-AMPKa1-T183/AMPKa2-T172 Rabbit pAb

Catalog No.: AP0432 **6 Publications**

Basic Information

Observed MW

62KDa

Calculated MW

64kDa/65kDa/62kDa

Category

Primary antibody

Applications

WB

Cross-Reactivity

Human, Mouse, Rat

Background

The protein encoded by this gene belongs to the ser/thr protein kinase family. It is the catalytic subunit of the 5'-prime-AMP-activated protein kinase (AMPK). AMPK is a cellular energy sensor conserved in all eukaryotic cells. The kinase activity of AMPK is activated by the stimuli that increase the cellular AMP/ATP ratio. AMPK regulates the activities of a number of key metabolic enzymes through phosphorylation. It protects cells from stresses that cause ATP depletion by switching off ATP-consuming biosynthetic pathways. Alternatively spliced transcript variants encoding distinct isoforms have been observed.

Recommended Dilutions

WB 1:500 - 1:2000

Immunogen Information

Gene ID

5562/5563

Swiss Prot

Q13131/P54646

Immunogen

A synthetic phosphorylated peptide around T183 of human PRKAA1PRKAA1 (NP_006242.5).

Synonyms

AMPKa1 / AMPKa2

Contact

 | www.abclonal.com

Product Information

Source

Rabbit

Isotype

IgG

Purification

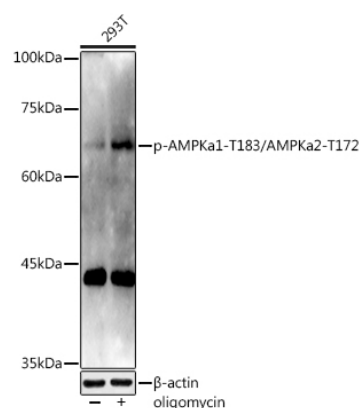
Affinity purification

Storage

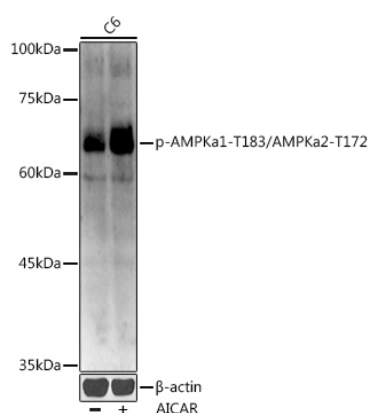
Store at -20°C. Avoid freeze / thaw cycles.

Buffer: PBS with 0.01% thiomersal, 50% glycerol, pH7.3.

Validation Data



Western blot analysis of extracts of 293T cells, using Phospho-AMPKa1-T183/AMPKa2-T172 antibody (AP0432) at 1:1000 dilution. 293T cells were treated by oligomycin (0.5 μ M) at 37°C for 30 minutes. Secondary antibody: HRP Goat Anti-Rabbit IgG (H+L) (AS014) at 1:10000 dilution. Lysates/proteins: 25ug per lane. Blocking buffer: 3% nonfat dry milk in TBST. Detection: ECL Basic Kit (RM00020). Exposure time: 90s.



Western blot analysis of extracts of C6 cells, using Phospho-AMPKa1-T183/AMPKa2-T172 antibody (AP0432) at 1:1000 dilution. C6 cells were treated by AICAR (0.5 mM) at 37°C for 30 minutes after serum-starvation overnight. Secondary antibody: HRP Goat Anti-Rabbit IgG (H+L) (AS014) at 1:10000 dilution. Lysates/proteins: 25ug per lane. Blocking buffer: 3% nonfat dry milk in TBST. Detection: ECL Enhanced Kit (RM00021). Exposure time: 90s.