

# EIF2B2 Rabbit pAb

Catalog No.: A7027

## Basic Information

### Observed MW

39kDa

### Calculated MW

38kDa

### Category

Primary antibody

### Applications

WB, IHC, IF/ICC, IP

### Cross-Reactivity

Human, Mouse, Rat

## Background

This gene encodes the beta subunit of eukaryotic initiation factor-2B (EIF2B). EIF2B is involved in protein synthesis and exchanges GDP and GTP for its activation and deactivation.

## Recommended Dilutions

<b>WB</b>	1:500 - 1:2000
<b>IHC</b>	1:50 - 1:200
<b>IF/ICC</b>	1:50 - 1:200
<b>IP</b>	1:50 - 1:200

## Immunogen Information

### Gene ID

8892

### Swiss Prot

P49770

### Immunogen

Recombinant fusion protein containing a sequence corresponding to amino acids 1-120 of human EIF2B2 (NP\_055054.1).

### Synonyms

EIF2B2; EIF-2Bbeta; EIF2B

## Contact

 | [www.abclonal.com](http://www.abclonal.com)

## Product Information

### Source

Rabbit

### Isotype

IgG

### Purification

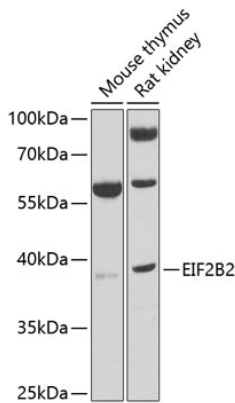
Affinity purification

### Storage

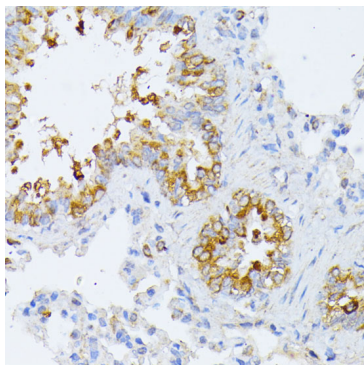
Store at -20°C. Avoid freeze / thaw cycles.

Buffer: PBS with 0.01% thiomersal, 50% glycerol, pH7.3.

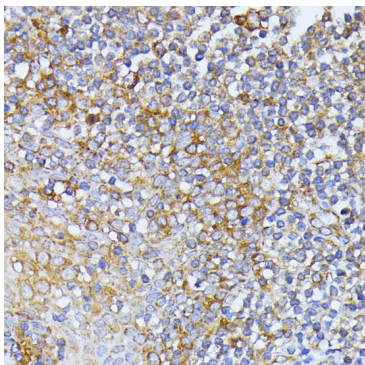
Validation Data



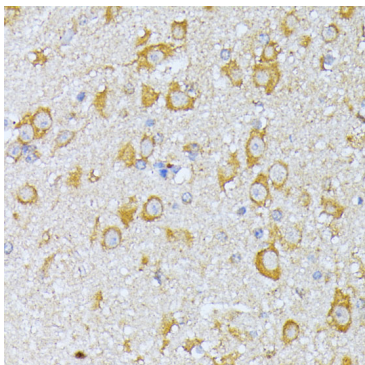
Western blot analysis of extracts of various cell lines, using EIF2B2 antibody (A7027) at 1:1000 dilution.  
Secondary antibody: HRP Goat Anti-Rabbit IgG (H+L) (A5014) at 1:10000 dilution.  
Lysates/proteins: 25ug per lane.  
Blocking buffer: 3% nonfat dry milk in TBST.  
Detection: ECL Basic Kit (RM00020).  
Exposure time: 10s.



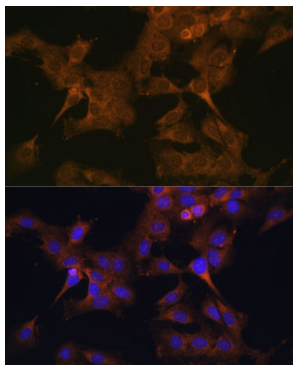
Immunohistochemistry of paraffin-embedded rat lung using EIF2B2 antibody (A7027) at dilution of 1:100 (40x lens).



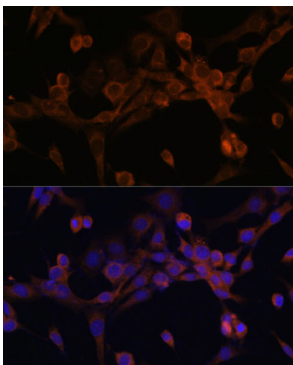
Immunohistochemistry of paraffin-embedded human tonsil using EIF2B2 antibody (A7027) at dilution of 1:100 (40x lens).



Immunohistochemistry of paraffin-embedded mouse brain using EIF2B2 antibody (A7027) at dilution of 1:100 (40x lens).



Immunofluorescence analysis of C6 cells using EIF2B2 antibody (A7027) at dilution of 1:100. Blue: DAPI for nuclear staining.



Immunofluorescence analysis of NIH/3T3 cells using EIF2B2 antibody (A7027) at dilution of 1:100. Blue: DAPI for nuclear staining.