

# BGN Rabbit pAb

Catalog No.: A3137

## Basic Information

### Observed MW

42kDa

### Calculated MW

41kDa

### Category

Primary antibody

### Applications

WB

### Cross-Reactivity

Human

## Background

This gene encodes a member of the small leucine-rich proteoglycan (SLRP) family of proteins. The encoded preproprotein is proteolytically processed to generate the mature protein, which plays a role in bone growth, muscle development and regeneration, and collagen fibril assembly in multiple tissues. This protein may also regulate inflammation and innate immunity. Additionally, the encoded protein may contribute to atherosclerosis and aortic valve stenosis in human patients. This gene and the related gene decorin are thought to be the result of a gene duplication.

## Recommended Dilutions

WB 1:500 - 1:1000

## Immunogen Information

### Gene ID

633

### Swiss Prot

P21810

### Immunogen

Recombinant fusion protein containing a sequence corresponding to amino acids 20-230 of human BGN (NP\_001702.1).

### Synonyms

BGN;DSPG1;MRLS;PG-S1;PGI;SEMDX;SLRR1A;biglycan

## Contact

 | [www.abclonal.com](http://www.abclonal.com)

## Product Information

### Source

Rabbit

### Isotype

IgG

### Purification

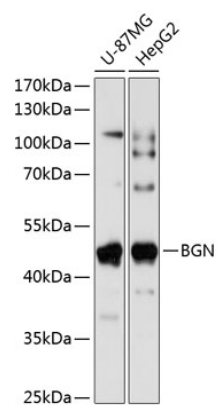
Affinity purification

### Storage

Store at -20°C. Avoid freeze / thaw cycles.

Buffer: PBS with 0.01% thiomersal, 50% glycerol, pH7.3.

# Validation Data



Western blot analysis of extracts of various cell lines, using BGN antibody (A3137) at 1:1000 dilution.  
Secondary antibody: HRP Goat Anti-Rabbit IgG (H+L) (A5014) at 1:10000 dilution.  
Lysates/proteins: 25ug per lane.  
Blocking buffer: 3% nonfat dry milk in TBST.  
Detection: ECL Basic Kit (RM00020).  
Exposure time: 5s.