

SARS-CoV-2 Spike S2 ECD Rabbit pAb

Catalog No.: A20138

Basic Information

Observed MW

75KDa

Calculated MW

Category

Primary antibody

Applications

DB, WB, IF/ICC, IP

Cross-Reactivity

SARS-CoV-2

Background

The spike protein (S) of coronavirus (CoV) attaches the virus to its cellular receptor, angiotensin-converting enzyme 2 (ACE2). A defined receptor-binding domain (RBD) on S mediates this interaction. The S protein plays key parts in the induction of neutralizing-antibody and T-cell responses, as well as protective immunity.

Recommended Dilutions

DB	1:500 - 1:2000
WB	1:500 - 1:2000
FC	1:50 - 1:200
IF/ICC	1:50 - 1:200

Immunogen Information

Gene ID

43740568

Swiss Prot

P0DTC2

Immunogen

A synthetic peptide corresponding to a sequence within amino acids 800-900 of SARS-CoV-2 Spike S2 ECD (YP_009724390.1).

Synonyms

Contact

 | www.abclonal.com

Product Information

Source

Rabbit

Isotype

IgG

Purification

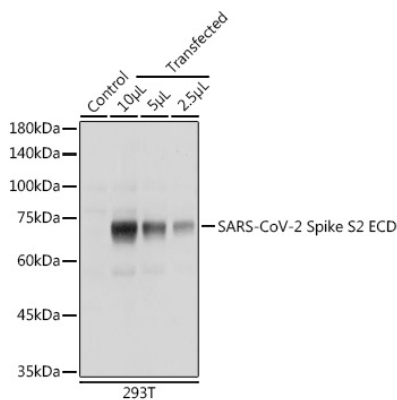
Affinity purification

Storage

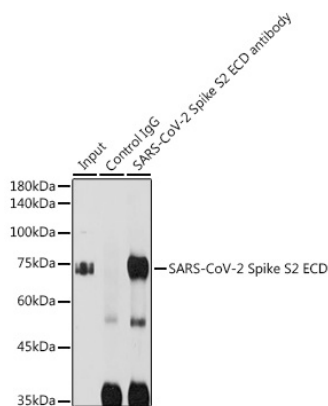
Store at -20°C. Avoid freeze / thaw cycles.

Buffer: PBS with 0.02% sodium azide, 50% glycerol, pH 7.3.

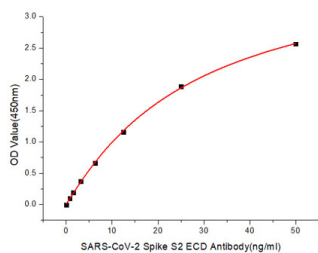
Validation Data



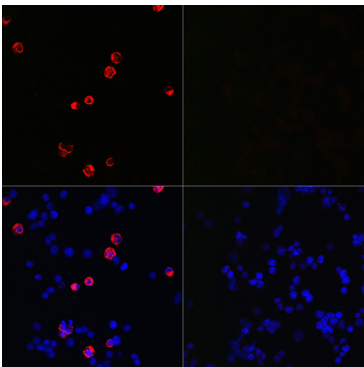
Western blot analysis of extracts of normal 293T cells transfected with Spike S2 ECD Protein, using SARS-CoV-2 Spike S2 ECD antibody (A20138) at 1:5000 dilution. Secondary antibody: HRP Goat Anti-Rabbit IgG (H+L) (A5014) at 1:10000 dilution. Lysates/proteins: 25ug per lane. Blocking buffer: 3% nonfat dry milk in TBST. Detection: ECL Enhanced Kit (RM00021). Exposure time: 1s.



Immunoprecipitation analysis of 300ug extracts of 293T cells using 3ug SARS-CoV-2 Spike S2 ECD antibody (A20138). Western blot was performed from the immunoprecipitate using SARS-CoV-2 Spike S2 ECD antibody (A20138) at a dilution of 1:5000.



Immobilized Recombinant SARS-COV2 S-ECD-PFS Protein(RP01283LQ) at 1µg/mL (100µL/well) can bind SARS-CoV-2 Spike S2 ECD Rabbit pAb (A20138) with a linear range of 3.12-50ng/mL.



Immunofluorescence analysis of 293T cells transfected with SARS-CoV-2 Spike S2 ECD fusion protein (top left) and untreated 293T cells (top right) use SARS-CoV-2 Spike S2 ECD Rabbit pAb (A20138) at dilution of 1:100 (40x lens). Blue: DAPI for nuclear staining.