

BRG1/SMARCA4 Rabbit mAb

Catalog No.: A19556 **Recombinant**

Basic Information

Observed MW

250kDa

Calculated MW

185kDa

Category

Primary antibody

Applications

WB,IHC,IF/ICC

Cross-Reactivity

Human, Mouse, Rat

CloneNo number

ARC0035

Background

The protein encoded by this gene is a member of the SWI/SNF family of proteins and is similar to the brahma protein of *Drosophila*. Members of this family have helicase and ATPase activities and are thought to regulate transcription of certain genes by altering the chromatin structure around those genes. The encoded protein is part of the large ATP-dependent chromatin remodeling complex SNF/SWI, which is required for transcriptional activation of genes normally repressed by chromatin. In addition, this protein can bind BRCA1, as well as regulate the expression of the tumorigenic protein CD44. Mutations in this gene cause rhabdoid tumor predisposition syndrome type 2. Multiple transcript variants encoding different isoforms have been found for this gene. [provided by RefSeq, May 2012]

Recommended Dilutions

WB	1:500 - 1:2000
IHC	1:50 - 1:200
IF/ICC	1:50 - 1:200

Immunogen Information

Gene ID

6597

Swiss Prot

P51532

Immunogen

A synthetic peptide corresponding to a sequence within amino acids 200-300 of human BRG1/SMARCA4 (P51532).

Synonyms

BAF190;BAF190A;BRG1;CSS4;MRD16;RTP52;SNF2;SNF2L4;SNF2LB;SWI2;hSNF2b;SMARCA4

Contact

 | www.abclonal.com

Product Information

Source

Rabbit

Isotype

IgG

Purification

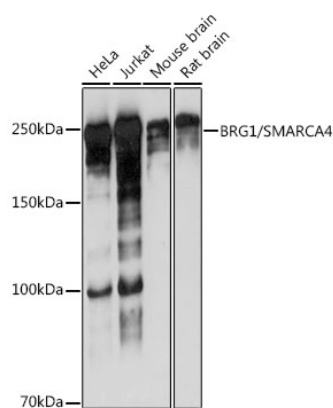
Affinity purification

Storage

Store at -20°C. Avoid freeze / thaw cycles.

Buffer: PBS with 0.01% thiomersal, 0.05% BSA, 50% glycerol, pH7.3.

Validation Data



Western blot analysis of extracts of various cell lines, using BRG1/SMARCA4 antibody (A19556) at 1:1000 dilution.

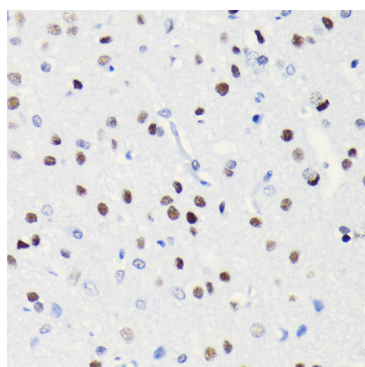
Secondary antibody: HRP Goat Anti-Rabbit IgG (H+L) (A5014) at 1:10000 dilution.

Lysates/proteins: 25ug per lane.

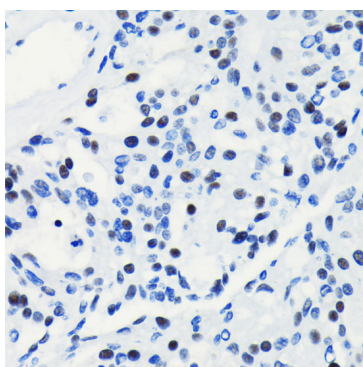
Blocking buffer: 3% nonfat dry milk in TBST.

Detection: ECL Basic Kit (RM00020).

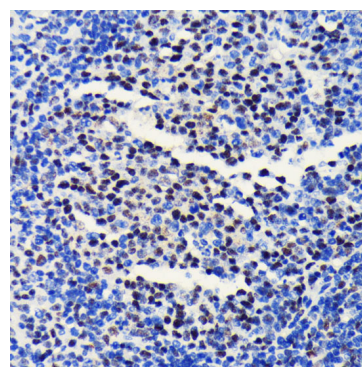
Exposure time: 3s.



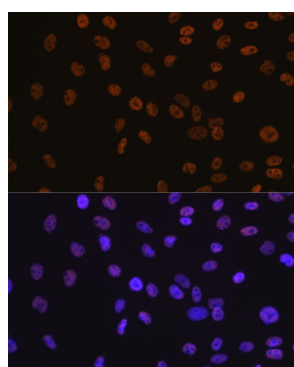
Immunohistochemistry of paraffin-embedded rat brain using BRG1/SMARCA4 antibody (A19556) at dilution of 1:100 (40x lens). Perform microwave antigen retrieval with 10 mM PBS buffer pH 7.2 before commencing with IHC staining protocol.



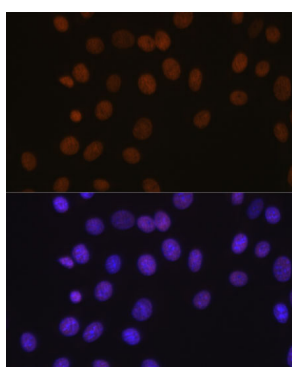
Immunohistochemistry of paraffin-embedded human oophoroma using BRG1/SMARCA4 antibody (A19556) at dilution of 1:100 (40x lens). Perform microwave antigen retrieval with 10 mM PBS buffer pH 7.2 before commencing with IHC staining protocol.



Immunohistochemistry of paraffin-embedded mouse spleen using BRG1/SMARCA4 antibody (A19556) at dilution of 1:100 (40x lens). Perform microwave antigen retrieval with 10 mM PBS buffer pH 7.2 before commencing with IHC staining protocol.



Immunofluorescence analysis of C6 cells using BRG1/SMARCA4 antibody (A19556). Blue: DAPI for nuclear staining.



Immunofluorescence analysis of NIH-3T3 cells using BRG1/SMARCA4 antibody (A19556). Blue: DAPI for nuclear staining.