

# MEIS1 Rabbit pAb

Catalog No.: A18273

## Basic Information

### Observed MW

50kDa/55kDa

### Calculated MW

43kDa

### Category

Primary antibody

### Applications

WB, IF/ICC

### Cross-Reactivity

Human, Mouse, Rat

## Background

Homeobox genes, of which the most well-characterized category is represented by the HOX genes, play a crucial role in normal development. In addition, several homeoproteins are involved in neoplasia. This gene encodes a homeobox protein belonging to the TALE ('three amino acid loop extension') family of homeodomain-containing proteins.

## Recommended Dilutions

<b>WB</b>	1:500 - 1:2000
<b>IF/ICC</b>	1:50 - 1:200

## Immunogen Information

<b>Gene ID</b>	<b>Swiss Prot</b>
4211	O00470

### Immunogen

A synthetic peptide corresponding to a sequence within amino acids 300-390 of human MEIS1 (NP\_002389.1).

### Synonyms

MEIS1

## Contact

 | [www.abclonal.com](http://www.abclonal.com)

## Product Information

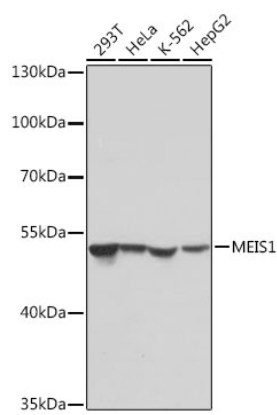
<b>Source</b>	<b>Isotype</b>	<b>Purification</b>
Rabbit	IgG	Affinity purification

### Storage

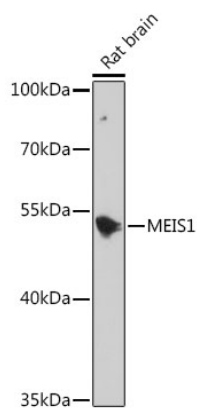
Store at -20°C. Avoid freeze / thaw cycles.

Buffer: PBS with 0.01% thiomersal, 50% glycerol, pH7.3.

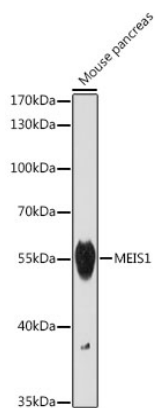
# Validation Data



Western blot analysis of extracts of various cell lines, using MEIS1 antibody (A18273) at 1:1000 dilution.  
Secondary antibody: HRP Goat Anti-Rabbit IgG (H+L) (AS014) at 1:10000 dilution.  
Lysates/proteins: 25ug per lane.  
Blocking buffer: 3% nonfat dry milk in TBST.  
Detection: ECL Basic Kit (RM00020).  
Exposure time: 10s.



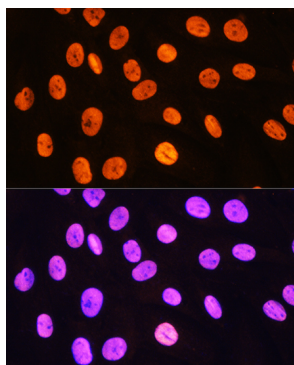
Western blot analysis of extracts of Rat brain, using MEIS1 antibody (A18273) at 1:1000 dilution.  
Secondary antibody: HRP Goat Anti-Rabbit IgG (H+L) (AS014) at 1:10000 dilution.  
Lysates/proteins: 25ug per lane.  
Blocking buffer: 3% nonfat dry milk in TBST.  
Detection: ECL Basic Kit (RM00020).  
Exposure time: 120s.



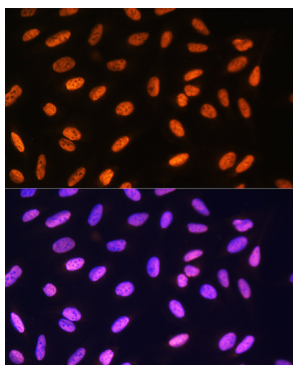
Western blot analysis of extracts of Mouse pancreas, using MEIS1 antibody (A18273) at 1:1000 dilution.  
Secondary antibody: HRP Goat Anti-Rabbit IgG (H+L) (AS014) at 1:10000 dilution.  
Lysates/proteins: 25ug per lane.  
Blocking buffer: 3% nonfat dry milk in TBST.  
Detection: ECL Basic Kit (RM00020).  
Exposure time: 120s.

## Validation Data

---



Immunofluorescence analysis of H9C2 cells using MEIS1 Rabbit pAb (A18273) at dilution of 1:100. Blue: DAPI for nuclear staining.



Immunofluorescence analysis of U2OS cells using MEIS1 Rabbit pAb (A18273) at dilution of 1:100. Blue: DAPI for nuclear staining.