

KCNS2 Rabbit pAb

Catalog No.: A15684

Basic Information

Observed MW

54kDa

Calculated MW

54kDa

Category

Primary antibody

Applications

WB, IHC, IF/ICC

Cross-Reactivity

Human, Mouse, Rat

Background

Potassium channel subunit that does not form functional channels by itself. Can form functional heterotetrameric channels with KCNB1 and KCNB2; modulates the delayed rectifier voltage-gated potassium channel activation and deactivation rates of KCNB1 and KCNB2.

Recommended Dilutions

WB	1:500 - 1:2000
IHC	1:50 - 1:100
IF/ICC	1:50 - 1:100

Immunogen Information

Gene ID

3788

Swiss Prot

Q9ULS6

Immunogen

Recombinant fusion protein containing a sequence corresponding to amino acids 1-187 of human KCNS2 (NP_065748.1).

Synonyms

KCNS2;KV9.2

Contact

 | www.abclonal.com

Product Information

Source

Rabbit

Isotype

IgG

Purification

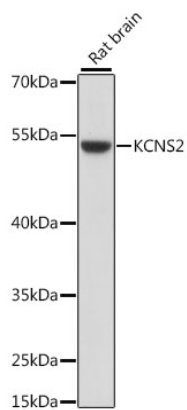
Affinity purification

Storage

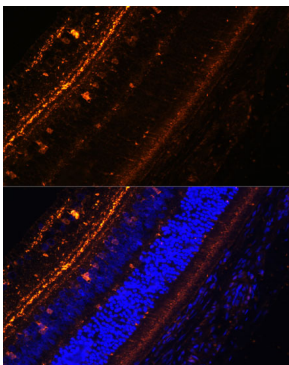
Store at -20°C. Avoid freeze / thaw cycles.

Buffer: PBS with 0.01% thiomersal, 50% glycerol, pH7.3.

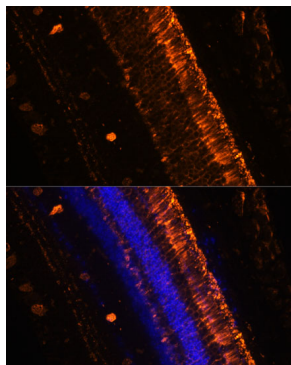
Validation Data



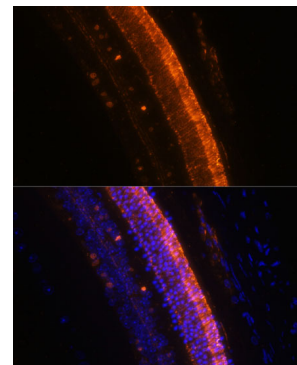
Western blot analysis of extracts of rat brain, using KCNS2 antibody (A15684) at 1:1000 dilution.
Secondary antibody: HRP Goat Anti-Rabbit IgG (H+L) (AS014) at 1:10000 dilution.
Lysates/proteins: 25ug per lane.
Blocking buffer: 3% nonfat dry milk in TBST.
Detection: ECL Basic Kit (RM00020).
Exposure time: 90s.



Immunofluorescence analysis of rat eye using KCNS2 Polyclonal Antibody (A15684) at dilution of 1:100 (40x lens). Blue: DAPI for nuclear staining.



Immunofluorescence analysis of mouse eye using KCNS2 Polyclonal Antibody (A15684) at dilution of 1:100 (20x lens). Blue: DAPI for nuclear staining.



Immunofluorescence analysis of mouse eye using KCNS2 Polyclonal Antibody (A15684) at dilution of 1:100 (40x lens). Blue: DAPI for nuclear staining.