

# KIF21A Rabbit pAb

Catalog No.: A16548

## Basic Information

### Observed MW

187kDa

### Calculated MW

180kDa/182kDa/185kDa/187kDa

### Category

Primary antibody

### Applications

WB,IF/ICC

### Cross-Reactivity

Human, Mouse

## Background

This gene encodes a member of the KIF4 subfamily of kinesin-like motor proteins. The encoded protein is characterized by an N-terminal motor domain a coiled-coil stalk domain and a C-terminal WD-40 repeat domain. This protein may be involved in microtubule dependent transport. Mutations in this gene are the cause of congenital fibrosis of extraocular muscles-1. Alternate splicing results in multiple transcript variants.

## Recommended Dilutions

|               |                |
|---------------|----------------|
| <b>WB</b>     | 1:500 - 1:2000 |
| <b>IF/ICC</b> | 1:50 - 1:200   |

## Immunogen Information

|                |                   |
|----------------|-------------------|
| <b>Gene ID</b> | <b>Swiss Prot</b> |
| 55605          | Q7Z4S6            |

### Immunogen

Recombinant fusion protein containing a sequence corresponding to amino acids 1070-1270 of human KIF21A (NP\_001166935.1).

### Synonyms

KIF21A;CFEOM1;FEOM1;FEOM3A

## Contact

 | [www.abclonal.com](http://www.abclonal.com)

## Product Information

|               |                |                       |
|---------------|----------------|-----------------------|
| <b>Source</b> | <b>Isotype</b> | <b>Purification</b>   |
| Rabbit        | IgG            | Affinity purification |

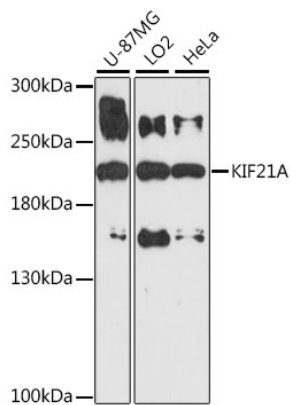
### Storage

Store at -20°C. Avoid freeze / thaw cycles.

Buffer: PBS with 0.01% thiomersal,50% glycerol,pH7.3.

## Validation Data

---



Western blot analysis of extracts of various cell lines, using KIF21A antibody (A16548) at 1:1000 dilution.

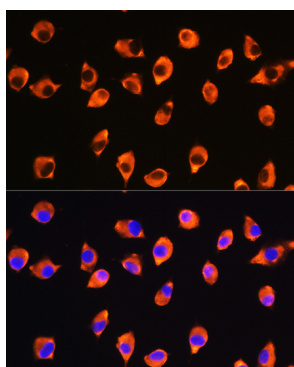
Secondary antibody: HRP Goat Anti-Rabbit IgG (H+L) (AS014) at 1:10000 dilution.

Lysates/proteins: 25ug per lane.

Blocking buffer: 3% nonfat dry milk in TBST.

Detection: ECL Basic Kit (RM00020).

Exposure time: 3min.



Immunofluorescence analysis of L929 cells using KIF21A Rabbit pAb (A16548) at dilution of 1:100. Blue: DAPI for nuclear staining.