

# PKM2 Rabbit pAb

Catalog No.: A13905

## Basic Information

### Observed MW

60KDa

### Calculated MW

56kDa/57kDa/58kDa

### Category

Primary antibody

### Applications

WB, IHC, IF/ICC

### Cross-Reactivity

Human, Mouse, Rat

## Background

This gene encodes a protein involved in glycolysis. The encoded protein is a pyruvate kinase that catalyzes the transfer of a phosphoryl group from phosphoenolpyruvate to ADP, generating ATP and pyruvate. This protein has been shown to interact with thyroid hormone and may mediate cellular metabolic effects induced by thyroid hormones. This protein has been found to bind Opa protein, a bacterial outer membrane protein involved in gonococcal adherence to and invasion of human cells, suggesting a role of this protein in bacterial pathogenesis. Several alternatively spliced transcript variants encoding a few distinct isoforms have been reported.

## Recommended Dilutions

WB	1:500 - 1:2000
IHC	1:50 - 1:200
IF/ICC	1:50 - 1:200

## Immunogen Information

Gene ID	Swiss Prot
5315	P14618

### Immunogen

Recombinant fusion protein containing a sequence corresponding to amino acids 11-221 of PKM2 (NP\_001193728.1).

### Synonyms

CTHBP;HEL-S-30;OIP3;PK3;PKM2;TCB;THBP1;PKM

## Contact

 | [www.abclonal.com](http://www.abclonal.com)

## Product Information

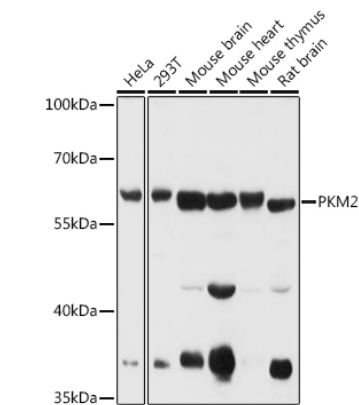
Source	Isotype	Purification
Rabbit	IgG	Affinity purification

### Storage

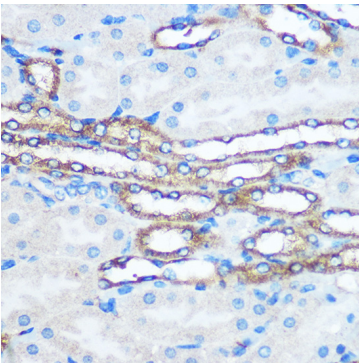
Store at -20°C. Avoid freeze / thaw cycles.

Buffer: PBS with 0.01% thiomersal, 50% glycerol, pH7.3.

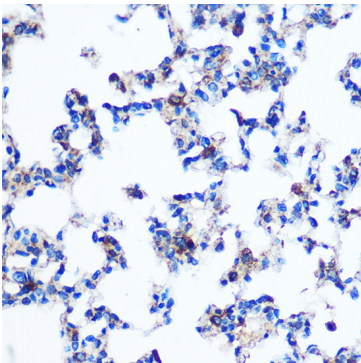
Validation Data



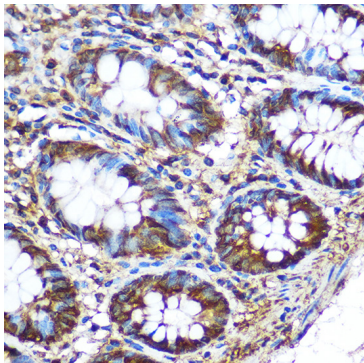
Western blot analysis of extracts of various cell lines, using PKM2 antibody (A13905) at 1:1000 dilution.  
Secondary antibody: HRP Goat Anti-Rabbit IgG (H+L) (A5014) at 1:10000 dilution.  
Lysates/proteins: 25ug per lane.  
Blocking buffer: 3% nonfat dry milk in TBST.  
Detection: ECL Basic Kit (RM00020).  
Exposure time: 1s.



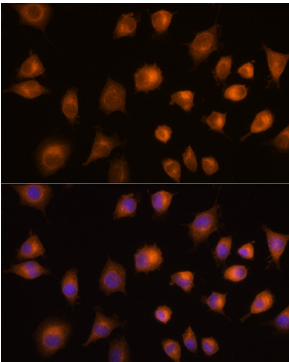
Immunohistochemistry of paraffin-embedded Mouse kidney using PKM2 Rabbit pAb (A13905) at dilution of 1:100 (40x lens).Perform microwave antigen retrieval with 10 mM PBS buffer pH 7.2 before commencing with IHC staining protocol.



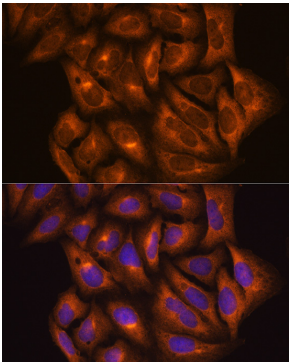
Immunohistochemistry of paraffin-embedded Rat lung using PKM2 Rabbit pAb (A13905) at dilution of 1:100 (40x lens).Perform microwave antigen retrieval with 10 mM PBS buffer pH 7.2 before commencing with IHC staining protocol.



Immunohistochemistry of paraffin-embedded Human colon using PKM2 Rabbit pAb (A13905) at dilution of 1:100 (40x lens).Perform microwave antigen retrieval with 10 mM PBS buffer pH 7.2 before commencing with IHC staining protocol.



Immunofluorescence analysis of L929 cells using PKM2 Rabbit pAb (A13905) at dilution of 1:100 (40x lens). Blue: DAPI for nuclear staining.



Immunofluorescence analysis of U2OS cells using PKM2 Rabbit pAb (A13905) at dilution of 1:100 (40x lens). Blue: DAPI for nuclear staining.