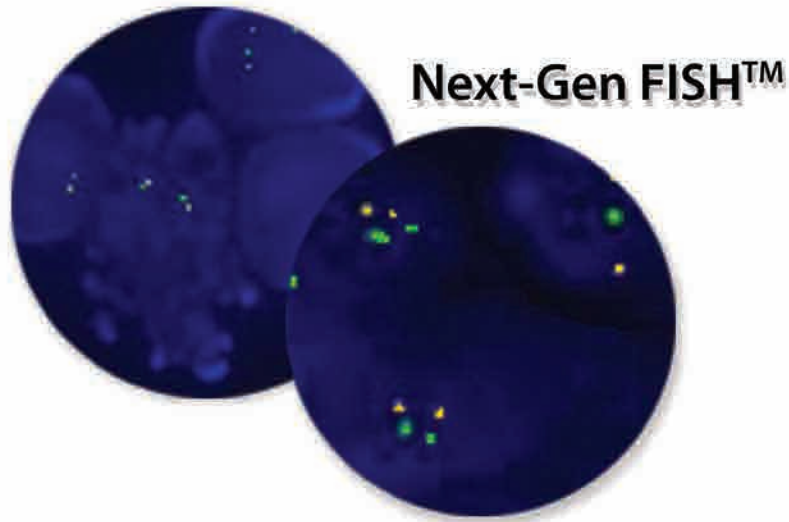
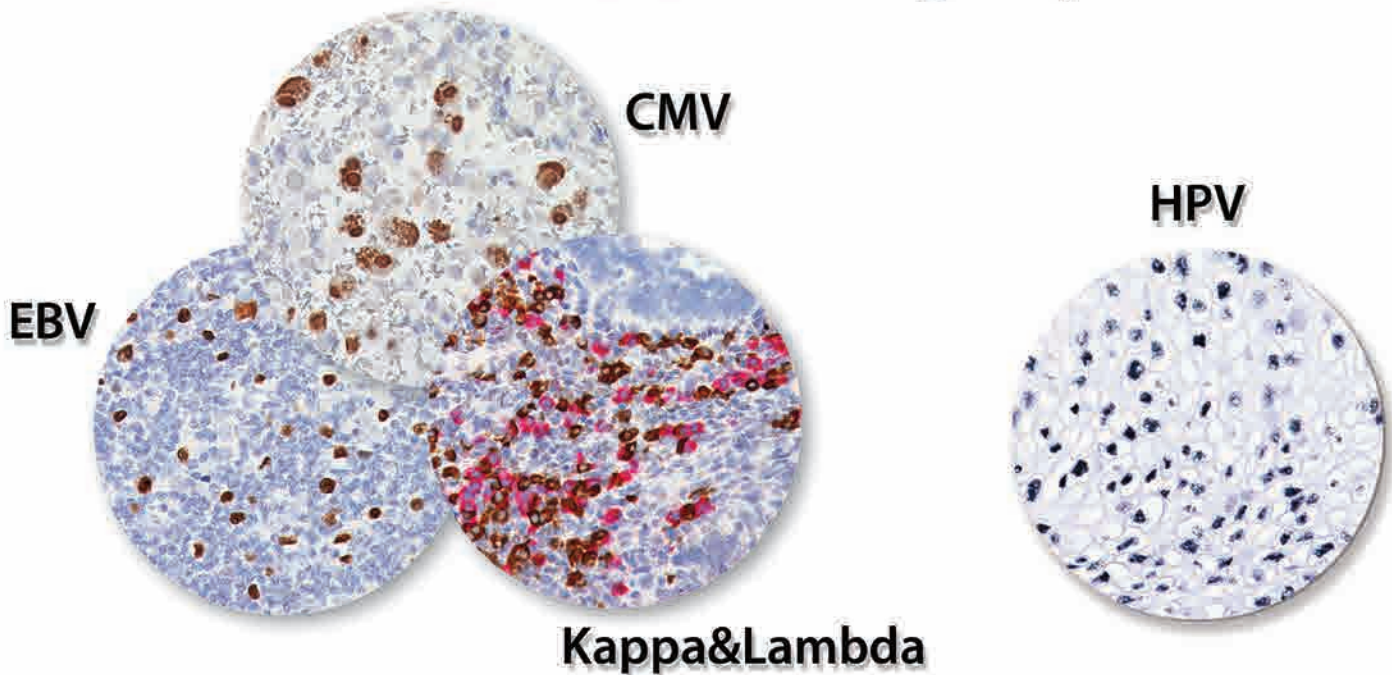


Sondes Fluorescentes



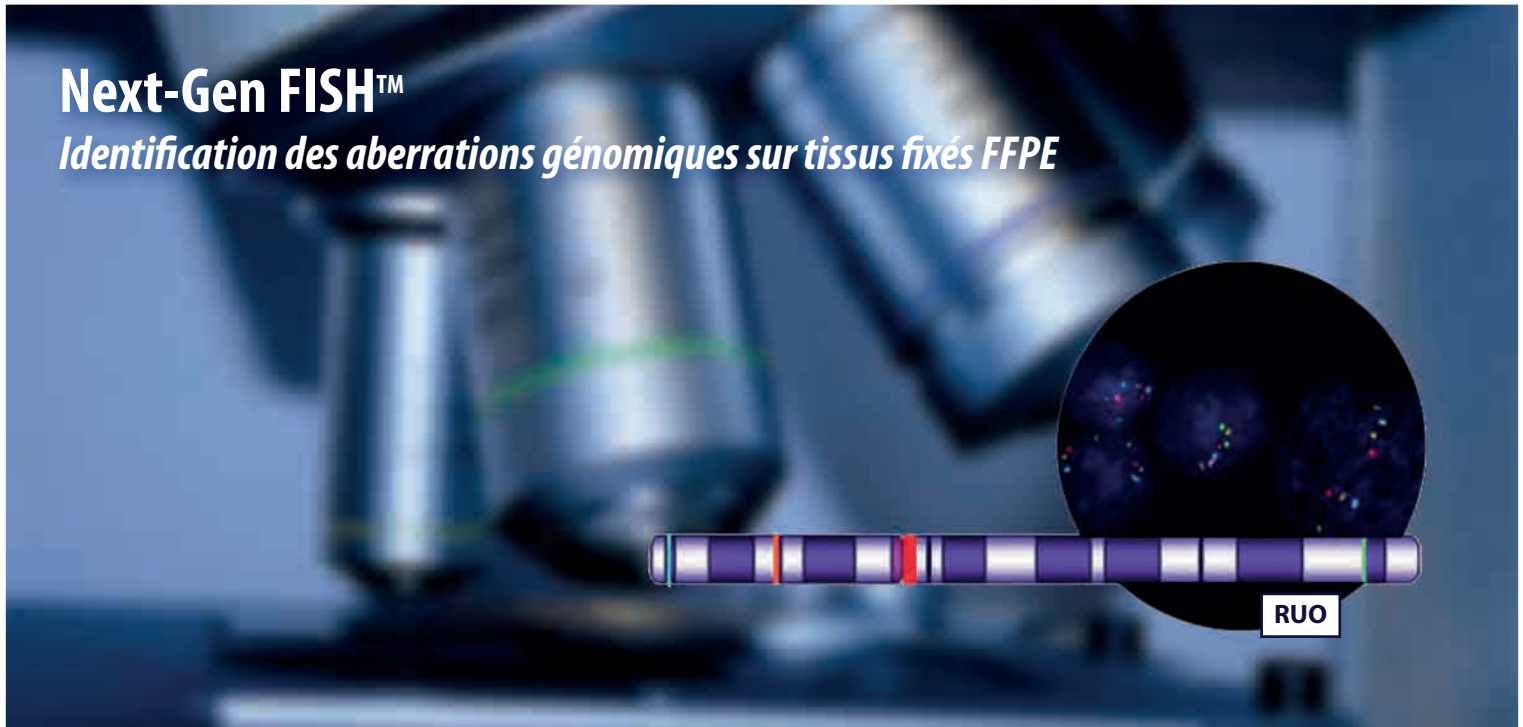
Sondes Chromogéniques



SONDES FISH

Next-Gen FISH™

Identification des aberrations génomiques sur tissus fixés FFPE



Les Next-Gen FISH™ sont des sondes spécifiques fluorescentes pour l'hybridation in situ.

Cette nouvelle génération de sondes permet l'étude de nombreux types de cancer.

Utilisées sur cellules isolées ou sur tissus fixés au formol et inclus en paraffine, ces sondes permettent la détection précise des aberrations chromosomiques des cellules cancéreuses.

| Description | Référence |
|--|-----------------|
| 1p21 Green | CYMO-1P21-2-025 |
| 1q21 + 1p21 | CYMO-1QP-10-100 |
| 1q21 + CC1 | CYMO-1Q1-10-100 |
| 1q21 Orange | CYMO-1Q21-8-025 |
| 1q21.3 Orange/ 1p21.2 Green | PFR7044A |
| 5p15.2 Red | CFR7251A |
| 5q31.2/5q32 | CYMO-5QD-10-100 |
| 6q21 Green | HFR7309A |
| 7q31 + Copy Control 7 | CYMO-7Q-10-100 |
| 7q31 Orange | CYMO-7Q31-8-025 |
| 13q del Tri-Color | CYMO-13Q-15-100 |
| 13q del-TECT 4 Color Probe Set | CYMO-13Q-23-100 |
| 20q12 Orange | CYMO-20Q-8 |
| 20q13.2 Green | CYMO-Z17-2-025 |
| 20q13.2 Orange | CYMO-Z17-8-025 |
| D13S25 (13q14.3) Orange | CYMO-D5-8-025 |
| D13S25 (13q14.3) Orange/ LAMP1 (13q34) Green | PFR7010A |
| D13S25/LAMP1 13q14.3/13q34 | CYMO-DL-10-100 |
| D13S319 (13q14.2) | HFR7267A |

| Description | Référence |
|---|-----------------|
| ALK (2p23.2) Break Apart (Orange/ Green) | PFR7002A |
| ALK BA 2p23.2 | CYMO-AK-10-100 |
| ALK BA 2p23.2 Red/Green | CYMO-AK-14-100 |
| ALK cen Green | CYMO-AKBC-2-025 |
| ALK tel Orange | CYMO-AKBT-8-025 |
| ALK/EML del-TECT 4 Color Probe Set | CYMO-AE-23-100 |
| ALK/EML4 Tri-Color | CYMO-AET-15-100 |
| AR (Xq12) + Copy Control Xp11.21 | CYMO-AR-14-100 |
| AR (Xq12) Red | CYMO-AR-12-025 |
| ATM 11q22.3 Green | CYMO-AM-2-100 |
| ATM 11q22.3 Orange | CYMO-AM-8 |
| ATM Aqua | CYMO-AM-1-025 |
| BCL2 (18q21) Break Apart (Orange/ Green) | PFR7005A |
| BCL2 BA 18q21 | CYMO-B2-10-100 |
| BCL2 cen Orange (18q21) | CYMO-B2BC-8-025 |
| BCL2 tel Green ASR | CYMO-B2BT-2-025 |
| BCL6 BA 3q27 | CYMO-B6-10-100 |
| CCND1 - 11q13 + Copy Control 11 | CYMO-C1-10-100 |
| CCND1 (11q13) Break Apart (Orange/ Green) | PFR7009A |
| CCND1 (11q13) Green | CYMO-C1-2 |
| CCND1 (11q13) Orange | CYMO-C1-8-100 |
| CCND1 BA 11q13 | CYMO-CBA-10-100 |
| CDKN2A (p16) 9p21 + CC9 | CYMO-CA9-10-100 |
| CDKN2A (p16) 9p21 Orange | CYMO-CA-8-025 |
| CDKN2A del-TECT 4 Color Probe Set | CYMO-CA-23-100 |

| Description | Référence |
|--|------------------|
| CSF1R (5q32) Orange | CYMO-5Q32-8-025 |
| EGFR Orange | CYMO-ER-8-025 |
| EGFR Orange + Copy Control 7 | CYMO-ER-10-100 |
| EGFR Red | CYMO-ER-12-025 |
| EGFR Red + Copy Control 7 | CYMO-ER-14-100 |
| EGR1 (5q31.2) Green | CYMO-5Q31-2-025 |
| ERBB2 (17q12) Orange + Copy Control 17 Green | PFR7014A |
| ERBB2 Orange | CYMO-E2-8-025 |
| ERBB2 Orange + Copy Control 17 | CYMO-E2-10-100 |
| ERBB2 Red | CYMO-E2-12-025 |
| ERBB2 Red + Copy Control 17 | CYMO-E2-14-100 |
| ERG BA - 21q22 | CYMO-EG-14-100 |
| FAS (10q24.1) Aqua | CYMO-FS-1-025 |
| FFPE Pre-treatment Kit | CYMO-PK-050ML |
| FGFR1 (8p11) Red + Copy Control 8 Green | PFR7016A |
| FGFR3 Aqua | CYMO-F3-1 |
| FGFR3 Green | CYMO-F3-2-100 |
| FGFR3 Orange | CYMO-F3-8 |
| IGH (14q32) Break Apart (Orange/Green) | PFR7020A |
| IGH (14q32) Constant Orange | HFR7278A |
| IGH (14q32) Variable Green | HFR7279A |
| IGH BA (14q32) Clear View Two Color | CYMO-IH-10-100 |
| IGH con Orange | CYMO-IHBC-8-025 |
| IGH Green/ CCND1 Orange/ FGFR3 Aqua | PFR7018A |
| IGH var Green | CYMO-IHBV-2-025 |
| IGH/BCL2 - t(14;18)(q32;q21) | CYMO-IB2-10-100 |
| IGH/CCND1 | CYMO-IC1-10-100 |
| IGH/CCND1/FGFR3 | CYMO-IC1F-11-100 |
| IGH/FGFR3 | CYMO-IF-10-100 |
| IGH/MAF | CYMO-IMF-10-100 |
| IGH/MALT1 | CYMO-IM1-10-100 |
| IGH/MYC | CYMO-IMC-10-100 |
| LAMP1 (13q24) Green | CYMO-L1-2-025 |
| LAMP1 (13q34) Aqua | HFR7282A |
| LAMP1 (13q34) Green | HFR7281A |
| LSP 5p15.2 Green | CYMO-5P-2-025 |
| LSP 5p15.2 Red | CYMO-5P-12-025 |
| MAF - 16q23 Orange | CYMO-MF-8-025 |
| MALT1 -18q21 Orange | CYMO-M1-8-025 |
| MALT1 BA - 18q21 | CYMO-MBA-10-100 |
| MALT1 Cen Orange (18q21) | CYMO-M1BC-8-025 |
| MALT1 Tel Green (18q21) | CYMO-M1BT-2-025 |
| MDM2 (12q15)/CC12 | CYMO-M212-14-100 |
| MET (7q31) + Copy Control 7 | CYMO-M7-10-100 |
| MET (7q31) Orange | CYMO-MT-8-025 |
| MET (7q31) Orange + Copy Control 7 Green | PFR7028A |
| MLL BA 11q23 | CYMO-ML-10-100 |
| MYB (6q23) Orange | HFR7283A |
| MYB (6q23) Red | CYMO-MB-12-025 |
| MYB 6q23/6q21 del Two Color (R/G) | CYMO-MBD-14-100 |

| Description | Référence |
|---|------------------|
| MYC (8q24) + Copy Control 8 | CYMO-MY8-10-100 |
| MYC (8q24) Aqua | CYMO-MC-1-025 |
| MYC (8q24) Break Apart (Orange/Green) | PFR7026A |
| MYC (8q24) Gold | CYMO-MC-4 |
| MYC (8q24) Green | CYMO-MC-2 |
| MYC (8q24) Orange | CYMO-MC-8 |
| MYC (8q24) Orange + Copy Control 8 Green | PFR7027A |
| MYC BA (8q24) Clear View Two Color | CYMO-MC-10-100 |
| MYC cen (8q24) Orange | CYMO-MCBC-8-025 |
| MYC tel (8q24) Green | CYMO-MCBT-2-025 |
| NKX (8p)/MYC del-TECT 4 Color Probe Set | CYMO-NM-23-100 |
| PHLPP1/Copy Control 18 | CYMO-P118-14-100 |
| PIK3CA Orange | CYMO-PA-8-025 |
| PIK3CA/Copy Control 3 | CYMO-PA3-10-100 |
| PTEN (10q23.31) Single Color Green | CYMO-PNS-2-100 |
| PTEN (10q23.31) Single Color Orange | CYMO-PNS-8 |
| PTEN + ERG 2+2 Multiplex FISH Probe | CYMO-PNEG-23-100 |
| PTEN del-TECT Four Color | PFR7032A |
| PTEN L-Flank (10q23.2) Green | CYMO-PNL-2-100 |
| PTEN R-Flank (10q24.1) Aqua | CYMO-PNR-1-100 |
| PTEN-del-TECT 4 Color Probe Set | CYMO-PND-23-100 |
| PTEN/Copy Control 10 (Orange/Green) | CYMO-PN10-10-100 |
| RB1 (13q14.2) Green | HFR7315A |
| RB1 (13q14.2) Orange | HFR7298A |
| RET (10q11.21) Break Apart (Orange/ Green) | PFR7039A |
| RET (10q11) Break Apart | CYMO-RT-10-100 |
| RET Cen Orange (10q11) | CYMO-RTBC-8-025 |
| RET Tel Green (10q11) | CYMO-RTBT-2-025 |
| ROS1 (6q22) Break Apart (Orange/ Green) | PFR7038A |
| ROS1 Break Apart | CYMO-R1-10-100 |
| RREB1 (6p25) Orange | CYMO-RB1-8-025 |
| RREB1 (6p25)/Copy Control 6 (6q11.1) | CYMO-RB1-10-100 |
| TERC (3q)/5p15/20q13/CC10 | CYMO-T5Z1-23-100 |
| TERC (3q)/5p15/CC6/CCND1 | CYMO-T56C-23-100 |
| TERC (3q)/5p15/CC7/CDKN2A (p16) | CYMO-TT7C-23-100 |
| TERC (3q26.2) Orange | CYMO-TC-8-025 |
| TERC (3q26.2) Red | CYMO-TC-12-025 |
| TERC (3q26.2)/Copy Control 7 | CYMO-TC7-10-100 |
| TERC (3q26)/TERT (5p15)/Copy Control 7 | CYMO-T57-11 |
| TMPRSS2/ ERG del-TECT Four Color | PFR7049A |
| TP53 (17p13) Orange | CYMO-T3-8 |
| TP53 (17p13) Orange + Copy Control 17 Green | PFR7036A |
| TP53 (17p13)/CC17 Red/Aqua | CYMO-P53-13-100 |
| TP53 del-TECT 4-Color Probe Set | CYMO-T3-23-100 |
| TP53 del-TECT Four Color | PFR7042A |
| WAPAL (10q23.2) Green | CYMO-WL-2-025 |

| Description | Référence |
|----------------------------|------------------|
| Copy Control 1 Aqua | CYMO-CC1-1-025 |
| Copy Control 1 Green | CYMO-CC1-2-025 |
| Copy Control 1 Orange | CYMO-CC1-8-025 |
| Copy Control 1 Red | CYMO-CC1-12-025 |
| Copy Control 3 Aqua | CFR7164A |
| Copy Control 3 Green | PFR7163V |
| Copy Control 3 Orange | CYMO-CC3-8-025 |
| Copy Control 3 Red | CYMO-CC3-12-025 |
| Copy Control 4q11 Aqua | CYMO-CC4Q-1-025 |
| Copy Control 4q11 Green | CYMO-CC4Q-2-025 |
| Copy Control 4q11 Orange | CYMO-CC4Q-8-025 |
| Copy Control 4q11 Red | CYMO-CC4Q-12-025 |
| Copy Control 5q11.2 Aqua | CYMO-CC5Q-1-025 |
| Copy Control 5q11.2 Green | CYMO-CC5Q-2-025 |
| Copy Control 5q11.2 Orange | CYMO-CC5Q-8-025 |
| Copy Control 5q11.2 Red | CYMO-CC5Q-12-025 |
| Copy Control 6 Aqua | CYMO-CC6-1-025 |
| Copy Control 6 Green | CYMO-CC6-2-025 |
| Copy Control 6 Orange | CYMO-CC6-8-025 |
| Copy Control 6 Red | CYMO-CC6-12-025 |
| Copy Control 7 Aqua | CYMO-CC7-1-025 |
| Copy Control 7 Green | CYMO-CC7-2-025 |
| Copy Control 7 Orange | CYMO-CC7-8-025 |
| Copy Control 7 Red | CYMO-CC7-12-025 |
| Copy Control 7p11.2 Green | CYMO-CC7P-2-025 |
| Copy Control 8 Aqua | CYMO-CC8-1-025 |
| Copy Control 8 Green | CYMO-CC8-2-025 |
| Copy Control 8 Orange | CYMO-CC8-8-025 |
| Copy Control 8 Red | CYMO-CC8-12-025 |
| Copy Control 9 Aqua | CYMO-CC9-1-025 |
| Copy Control 9 Green | CYMO-CC9-2-025 |
| Copy Control 9 Orange | CYMO-CC9-8-025 |
| Copy Control 9 Red | CYMO-CC9-12-025 |
| Copy Control 10 Aqua | CYMO-CC10-1-025 |
| Copy Control 10 Green | CFR7200A |
| Copy Control 10 Orange | CYMO-CC10-8-025 |
| Copy Control 10 Red | CYMO-CC10-12-025 |
| Copy Control 11 Aqua | CYMO-CC11-1-025 |
| Copy Control 11 Green | CYMO-CC11-2-025 |
| Copy Control 11 Orange | CYMO-CC11-8-025 |
| Copy Control 11 Red | CYMO-CC11-12-025 |
| Copy Control 12 Aqua | CYMO-CC12-1-025 |
| Copy Control 12 Green | CYMO-CC12-2-025 |
| Copy Control 12 Orange | CYMO-CC12-8-025 |
| Copy Control 12 Red | CYMO-CC12-12-025 |
| Copy Control 15 Aqua | CYMO-CC15-1-025 |
| Copy Control 15 Green | CYMO-CC15-2-025 |
| Copy Control 15 Orange | CYMO-CC15-8-025 |
| Copy Control 15 Red | CYMO-CC15-12-025 |
| Copy Control 16 Aqua | CYMO-CC16-1-025 |
| Copy Control 16 Green | CYMO-CC16-2-025 |
| Copy Control 16 Orange | CYMO-CC16-8-025 |
| Copy Control 16 Red | CYMO-CC16-12-025 |
| Copy Control 17 Aqua | CYMO-CC17-1-025 |

| Description | Référence |
|---|------------------|
| Copy Control X Aqua | CYMO-CCX-1-025 |
| Copy Control X Green | CYMO-CCX-2-025 |
| Copy Control X Orange | CYMO-CCX-8-025 |
| Copy Control X Red | CYMO-CCX-12-025 |
| Copy Control X Red + Copy Control Y Green | PFR7050A |
| Copy Control X/Y | CYMO-CCXY-14-100 |
| Copy Control Y Aqua | CYMO-CCY-1-025 |
| Copy Control Y Green | CYMO-CCY-2-025 |
| Copy Control Y Orange | CYMO-CCY-8-025 |
| Copy Control Y Red | CYMO-CCY-12-025 |

Réactifs annexes

| Description | Référence |
|-----------------------------------|----------------|
| CymoBrite (100ng/ml) Counterstain | CYMO-CB100-500 |
| CymoBrite Counterstain | CYMO-CB-500 |
| Hyb Buffer | CYMO-HB-100 |
| Hybridization Buffer | CYMO-HYB-100 |

SONDES RISH™

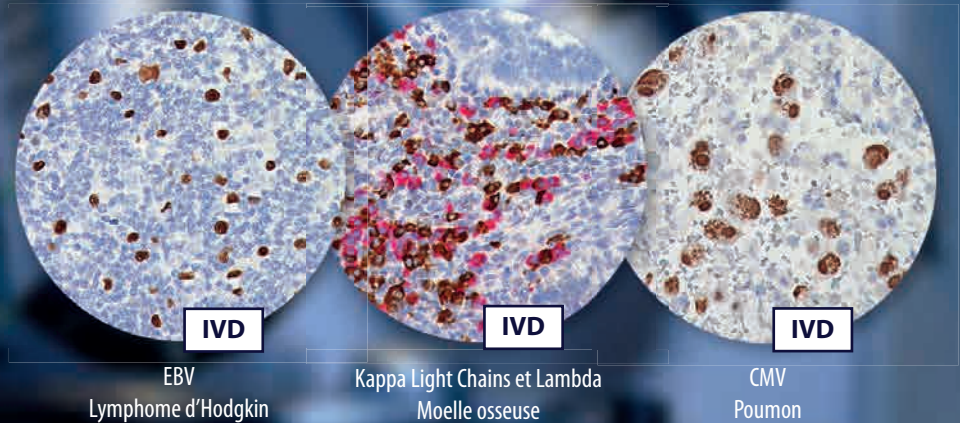
EBER

Kappa & Lambda

CMV

BIOCARE
MEDICAL

Technologie RISH™ Hybridation *in situ* et visualisation rapide d'un ARNm cible



L'observation des tissus est facilitée par un signal chromogénique stable et un faible bruit de fond. Cette technologie permet la détection d'un ARNm cible dans des tissus fixés FFPE tout en appréciant la morphologie du prélèvement.

Rapide :
Résultat en 2,5 heures

Procédure simplifiée :
5 étapes comme pour l'IHC

Spécifique et Sensible :
Propriété de technologie ADN

Polyvalente :
Evaluation simultanée de l'expression génique et de la morphologie tissulaire

Archivable : Signal chromogénique stable pour le stockage des données expérimentales

Protocole en 5 étapes



Le protocole a été simplifié par la suppression de l'étape d'hybridation sur la nuit en utilisant une solution de lavage RNase free ayant des propriétés réfringentes favorisant ainsi l'hybridation des sondes. La procédure expérimentale demande ainsi 2,5 heures.

Sondes

| Référence | Description |
|-----------|--------------------------------------|
| RI0001T | RISH EBER Probe |
| RI0004T | RISH Kappa Light Chain Probe |
| RI0005T | RISH Lambda Light Chain Probe |
| RI0011T | RISH CMV Probe |
| RI0027T | RISH Dual Kappa/Lambda Probe |

Contrôles

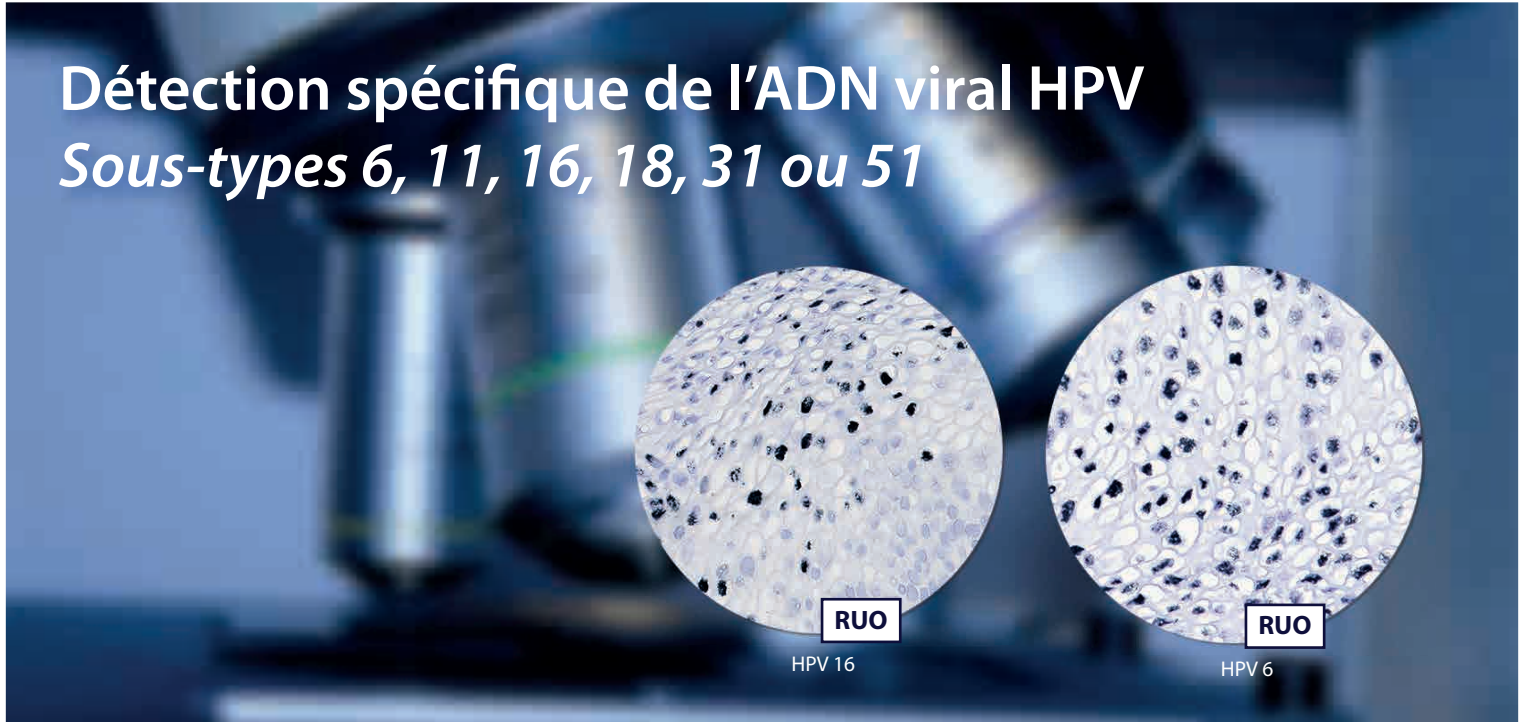
| Référence | Description |
|-----------|---------------------------------|
| BRR4026T | RISH DNA Positive Control Probe |
| BRR4027T | RISH DNA Negative Control Probe |
| BRR4028T | RISH RNA Positive Control Probe |
| BRR4029T | RISH RNA Negative Control Probe |

Réactifs Annexes

| Référence | Description |
|-----------|------------------------------|
| RI0207KG | RISH Detection Kit |
| RI0208KG | RISH Dual Detection Kit |
| RI0209M | RISH Retrieval 10x 500ml |
| RI0210C | RISH HybriSlips 100 each |
| RI0213KG | RISH AP Detection Kit 6.0 ml |

SONDES ISH CHROMOGENIQUES

Détection spécifique de l'ADN viral HPV Sous-types 6, 11, 16, 18, 31 ou 51



HPV de bas grade : Sous-types 6 et 11

HPV de haut grade : Sous-types 16, 18, 31 et 51

Technologie d'hybridation in situ chromogénique pour la détection spécifique de l'ADN viral HPV sous-types 6, 11, 16, 18, 31 ou 51.

Les sondes sont biotinylées et construites pour minimiser le bruit de fond.

| Description | Certification | Conditionnement | Référence |
|---|---------------|-----------------|------------|
| HPV Type 6 Probe | RUO | 0.1 ml | BRR4030A |
| HPV Type 11 Probe | RUO | 0.1 ml | BRR4031A |
| HPV Type 16 Probe | RUO | 0.1 ml | BRR4032A |
| HPV Type 18 Probe | RUO | 0.1 ml | BRR4033A |
| HPV Type 31 Probe | RUO | 0.1 ml | BRR4034A |
| HPV Type 51 Probe | RUO | 0.1 ml | BRR4035A |
| ISH HRP Detection Kit for Biotinylated Probes | IVD | 6 ml | BRI4038KG |
| Deep Space Black Chromogen Kit | IVD | 25 ml | BRI4015H |
| DNA Hybridization Buffer | IVD | 10 ml | BRI4036G10 |
| SSC Wash Buffer | IVD | 1000 ml | BRI4039MM |
| Carezyme III: Pronase Kit | IVD | 25 ml | PRT957KH |
| Pronase Buffer | IVD | 25 ml | PRB957H |



Contactez-nous

Tél: + 33 (0)5 34 25 97 47

Fax: + 33 (0)5 17 47 51 83

info@diagomics.com

www.diagomics.com