



Rabbit Anti-Human Actin-Smooth Muscle (SMA) Monoclonal Antibody (Clone SP171)

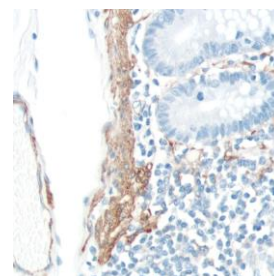
CATALOG #:

M4710 0.1 ml rabbit monoclonal antibody purified by protein A/G in PBS/1% BSA buffer pH 7.6 with less than 0.1% sodium azide.

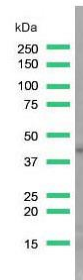
M4712 0.5 ml rabbit monoclonal antibody purified by protein A/G in PBS/1% BSA buffer pH 7.6 with less than 0.1% sodium azide.

M4714 1.0 ml rabbit monoclonal antibody purified by protein A/G in PBS/1% BSA buffer pH 7.6 with less than 0.1% sodium azide.

M4711 7.0 ml pre-diluted rabbit monoclonal antibody purified by protein A/G in TBS/1% BSA buffer pH 7.6 with less than 0.1% sodium azide. (For IHC only)



Human colon stained with anti-SMA antibody



Western Blot analysis of HeLa cell lysate with SMA antibody.

INTENDED USE:

For Research Use Only. Not for use in diagnostic procedures.

CLONE:

SP171

IMMUNOGEN:

Synthetic peptide near the N-terminus of human SMA protein.

IG ISOTYPE:

Rabbit IgG

EPITOPE:

Not determined

MOLECULAR WEIGHT:

42 kDa

SPECIES REACTIVITY:

Human (tested). (See www.springbio.com for information on species reactivity predicted by sequence homology.)

DESCRIPTION:

Smooth muscle actin-alpha (SMA) is a cytoskeleton protein in smooth muscle cells and their derived tumors such as leiomyoma and leiomyosarcoma. It is also expressed in myoepithelial cells of the breast and salivary gland, but not in fibroblasts, striated muscle, and myocardium.

APPLICATIONS:

Immunohistochemistry (IHC) and Western Blotting

IHC PROCEDURE:

Specimen Preparation: Formalin-fixed, paraffin-embedded tissues are suitable for use with this primary antibody.

Deparaffinization: Deparaffinize slides using xylene or xylene alternative and graded alcohols.

Antibody Dilution: If using the concentrate format of this product, dilute the antibody 1:200. The dilutions are estimates; actual results may differ because of variability in methods and protocols.

Antigen Retrieval: None.

Primary Antibody Incubation: Incubate for 10 minutes at room temperature.

Slide Washing: Slides must be washed in between steps. Rinse slides with PBS/0.05% Tween.

Visualization: Detect the antibody as instructed by the instructions provided with the visualization system.

IHC POSITIVE CONTROL:

Colon, Small Intestine

WESTERN BLOTTING:

Recommended starting protocol: Dilute the antibody 1:50. Incubate for 1 hour at room temperature.

The dilution is an estimate; actual results may differ because of variability in methods and protocols. Optimal dilution and procedure should be determined by the end user.

WESTERN BLOTTING

POSITIVE CONTROL:

HeLa Cell Lysate

CELLULAR LOCALIZATION:

Cytoplasm

STORAGE & STABILITY:

Store at 2-8°C. Do not freeze. The user must validate any other storage conditions. When properly stored, the reagent is stable to the date indicated on the label. Do not use the reagent beyond the expiration date.

There are no definitive signs to indicate instability of this product; therefore, positive and negative controls should be tested simultaneously with unknown specimens.

If unexpected results are observed which cannot be explained by variations in laboratory procedures and a problem with the reagent is suspected, contact Technical Support at spring.tech@ventana.roche.com.

**WARNINGS &
PRECAUTIONS:**

1. Avoid contact of reagents with eyes and mucous membranes. If reagents come into contact with sensitive areas, wash with copious amounts of water.
2. This product is harmful if swallowed.
3. Consult local or state authorities with regard to recommended method of disposal.
4. Avoid microbial contamination of reagents.