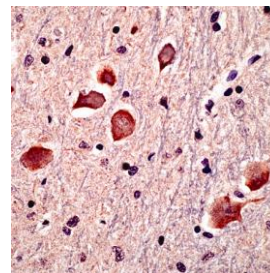




## Rabbit Anti-Human 14-3-3 $\beta$ Polyclonal Antibody

- CATALOG #:**
- E2920** 0.1 ml immunogen affinity purified rabbit polyclonal antibody in PBS/1% BSA buffer pH 7.6 with less than 0.1% sodium azide.
  - E2922** 0.5 ml immunogen affinity purified rabbit polyclonal antibody in PBS/1% BSA buffer pH 7.6 with less than 0.1% sodium azide.
  - E2924** 1.0 ml immunogen affinity purified rabbit polyclonal antibody in PBS/1% BSA buffer pH 7.6 with less than 0.1% sodium azide.
  - E2921** 7.0 ml pre-diluted immunogen affinity purified rabbit polyclonal antibody in TBS/1% BSA buffer pH 7.6 with less than 0.1% sodium azide. (For IHC only)



Human brain stained with anti-14-3-3 beta antibody



Western Blot analysis of Jurkat cell lysate with 14-3-3-beta antibody

- INTENDED USE:** For Research Use Only. Not for use in diagnostic procedures.
- CLONE:** N/A
- IMMUNOGEN:** Synthetic peptide from N-terminus of human 14-3-3 beta.
- IG ISOTYPE:** Rabbit IgG
- EPITOPE:** Not determined
- MOLECULAR WEIGHT:** 30kDa
- SPECIES REACTIVITY:** Human (tested). (See [www.springbio.com](http://www.springbio.com) for information on species reactivity predicted by sequence homology.)
- DESCRIPTION:** At least 7 mammalian isoforms comprise the 14-3-3 family of signaling intermediates. 14-3-3 molecules are highly conserved, expressed in a broad range of tissues and cell types and were first discovered as a series of highly abundant proteins in brain tissue. There is increasing evidence that 14-3-3 proteins are critical to cell transformation and mitotic signaling.
- APPLICATIONS:** Immunohistochemistry (IHC) and Western Blotting
- IHC PROCEDURE:**  
**Specimen Preparation:** Formalin-fixed, paraffin-embedded tissues are suitable for use with this primary antibody.  
**Deparaffinization:** Deparaffinize slides using xylene or xylene alternative and graded alcohols.  
**Antibody Dilution:** If using the concentrate format of this product, dilute the antibody 1:100. The dilutions are estimates; actual results may differ because of variability in methods and protocols.  
**Antigen Retrieval:** Boil tissue section in 10mM citrate buffer, pH 6.0 for 10 min followed by cooling at room temperature for 20 min.  
**Primary Antibody Incubation:** Incubate for 10 minutes at room temperature.  
**Slide Washing:** Slides must be washed in between steps. Rinse slides with PBS/0.05% Tween.  
**Visualization:** Detect the antibody as instructed by the instructions provided with the visualization system.
- IHC POSITIVE CONTROL:** Brain
- WESTERN BLOTTING:** Recommended starting protocol: Dilute the antibody 1:25. Incubate for 1 hour at room temperature. The dilution is an estimate; actual results may differ because of variability in methods and protocols. Optimal dilution and procedure should be determined by the end user.
- WESTERN BLOTTING POSITIVE CONTROL:** Jurkat cell lysate
- CELLULAR LOCALIZATION:** Cytoplasm

**STORAGE & STABILITY**

Store at 2-8°C. Do not freeze. The user must validate any other storage conditions. When properly stored, the reagent is stable to the date indicated on the label. Do not use the reagent beyond the expiration date.

There are no definitive signs to indicate instability of this product; therefore, positive and negative controls should be tested simultaneously with unknown specimens.

If unexpected results are observed which cannot be explained by variations in laboratory procedures and a problem with the reagent is suspected, contact Technical Support at [spring.tech@ventana.roche.com](mailto:spring.tech@ventana.roche.com).

**WARNINGS &  
PRECAUTIONS:**

1. Avoid contact of reagents with eyes and mucous membranes. If reagents come into contact with sensitive areas, wash with copious amounts of water.
2. This product is harmful if swallowed.
3. Consult local or state authorities with regard to recommended method of disposal.
4. Avoid microbial contamination of reagents.